

STEEL AND ALUMINIUM HOLLOW PISTON CYLINDERS, SPRING RETURN

FEATURES

All **CMF** cylinders are supplied as standard with a smooth hollow bore saddle which screws into the bore of the rod. The body has a metric collar thread and there are base mounting holes to allow for the fitting of accessories.

The end of stroke nut has a wiper seal to prevent the penetration of dirt.

Cylinders are supplied with anti-corrosive treatment, which is very effective to protect the central bore.

OPERATIONAL AREAS

These cylinders are recommended for tensioning, pulley and bush extracting, hot and cold pulling etc.

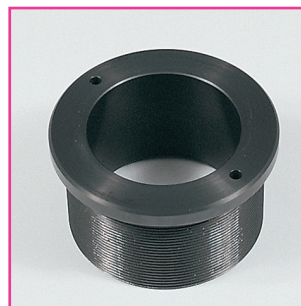
They can also be used in both pull and push operations by inserting either a bar or a cable through the hollow saddle. These cylinders are also supplied with the UE pullers.

p. 25

ACCESSORIES



■ **ZTE threaded saddle**, for use with threaded bar and extension screws.



STANDARD

■ **Smooth hollow saddle**, prevents any risk of rod deformation.

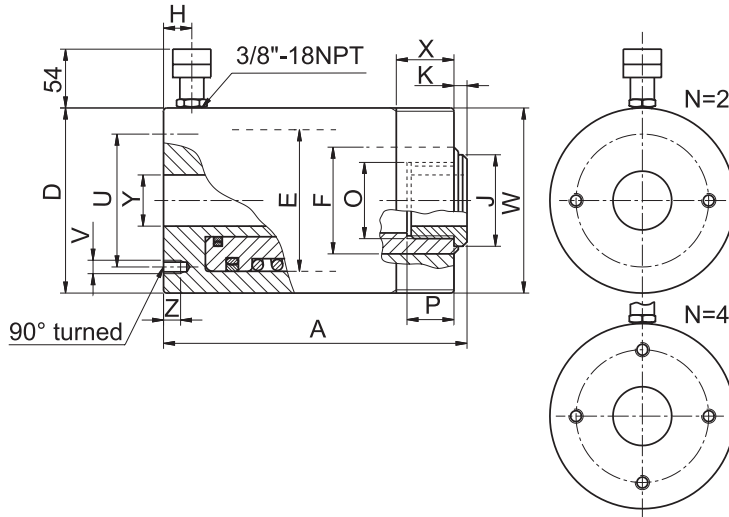
OPTIONS

■ **L Version**, cylinders with aluminium body (CMF###L###).



Our technical department is available to design **special customised solutions**.

STEEL AND ALUMINIUM HOLLOW PISTON CYLINDERS, SPRING RETURN



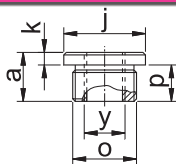
- Force **10 - 100 t**
- Stroke **50 - 160 mm**
- Max working pressure **700 bar**

SELECTION CHART

Pushing force t* kN	Stroke mm	Oil volume cm ³	MODEL	Closed height	Ø External Dia./External Dia. L version	Piston Dia.	Rod Dia.	Coupler height	Hollow saddle Dia.	Rod projection	Rod internal thread	Rod thread depth	PCD mounting holes	Base mounting holes... Holes depth	Collar thread	Collar thread length	Through hole Dia.	Weight	Weight L version
				A	D	E	F	H	J	K	O	P	U	V/Z	W	X	Y	kg	kg
10 123	50	88	CMF10N50	132	74/75	55	40	19	34,5	1	M30x1,5	16	50,8	2xM8 8	M74x2	20	21	3,8	2,5
	80	141	CMF10N80	176														4,8	3,1
20 230	50	164	CMF20N50	150	100/105	75	56	19	47,5	2	M40x1,5	24	82,6	2xM8 10	M100x2	20	28	7,8	5,3
	100	328	CMF20N100	221														10,7	7,4
	160	525	CMF20N160	305														14,1	9,5
30 334	50	239	CMF30N50	160	115/125	90	65	21	57,5	2	M48x1,5	32	92,2	2xM10 12	M115x2	20	34	10,5	8,1
	100	477	CMF30N100	233														14,5	11
	150	716	CMF30N150	303														18,1	13,6
60 590	75	632	CMF60N75	219	165/180	125	90	26	81,5	2	M72x1,5	40	130,2	2xM12 16	M165x4	25	54,5	28,9	21,4
	150	1264	CMF60N150	331														39,9	28,6
100 947	75	1015	CMF100N75	270	215/235	165	125	36	117,5	4	M102x1,5	55	130	4xM12 15	M215x4	35	80,5	59,3	44,6

* Nominal value, see kN for the exact force

ACCESSORIES: ZTE THREADED SADDLES



MODEL	For use with	a	k	j	p	y	o	kg
ZTE10	CMF10 # # # #	20	4	34,5	16	3/4" - 16 UNC	M30x1,5	0,1
ZTE20	CMF20 # # # #	30	6	47,5	24	1" - 8 UNC	M40x1,5	0,25
ZTE30	CMF30 # # # #	39	7	57,5	32	1 1/4" - 7 UNC	M48x1,5	0,32
ZTE60	CMF60 # # # #	47	7	81,5	40	1 5/8" - 5 1/2 UNS	M72x1,5	0,85

MODEL CODING

CMF	10	N	###
Series	Pushing force in tonne	N = In steel L = in aluminium	Stroke in mm