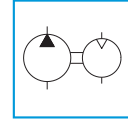


## AIR-HYDRAULIC PUMPS FROM 80 TO 2100 BAR



■ Reservoir Capacity	<b>2,4 - 5 - 10 l</b>
■ Max Pressure	<b>80 - 350 - 700 - 1000 - 1500 - 2100 bar</b>
■ Inlet Air Pressure	<b>2,8 - 8,5 bar</b>
■ Air Consumption	<b>500 - 2100 l/min</b>

### FEATURES

Air- hydraulic pumps are extremely light and versatile. Tests results show how exceptionally reliable and suitable they are for the most difficult uses thanks to their unique design (series SA, MA, HA, TA, VA, made of plastic material outside and metal alloy inside).

There are six multiplying factors: 19:1, 60:1, 122.1, 196:1, 278:1, 345:1 for maximum oil pressure values respectively of 80, 350, 700, 1000, 1500, 2100 bar.

All the pumps (version KA excluded) have a maximum pressure valve non adjustable from the outside. The outward pressure can be adjusted varying the inward air pressure.

The four basic version are:

- **MLP0** with P and T outlets, to be used with on-line valves.
- **MLP1** with Cetop 3 plate
- **MLP2** with three-way valve (with control pedal) for single acting cylinders
- **MLP4** with four-way valve (with hand lever) four double acting cylinders.

A series of options can be added to the basic version to complete the pump action. See table page 57.

### APPLICATIONS

In the rapid exchange of the equipments on machine tools (80 bar), in hydraulic clamping (80 and 350 bar), in the industrial sector (350 bar), for lifting, maintenance, automotive sector (700 bar) together with bolt tensioner cylinders and hydraulic nuts (1000 and 1500 bar), bearings press fitting, for laboratory and burst tests (1500 and 2100 bar).



### STANDARD

- **C cage** on model MLP23KAG.
- **G gauge** on model MLP23KAG.
- **Pressure reducer** for air supply on model MLP21VAG and MLP23KAG.



### ACCESSORIES

- **ZML14 pressure reducer** for air supply.
- **ZMB7 pressure booster**, adaptable to the MLP21# to multiply outgoing pressure (Ratio 4:1). Inlet 3/8" NPT, outlet 3/4" -16 UNF.
- **RP52 gauge adaptor** for gauge type G106L.



The 2,4l reservoir is made of plastics, while the 5 and 10 l ones are made of steel.

Follow EUROPRESS safety instructions. See useful pages

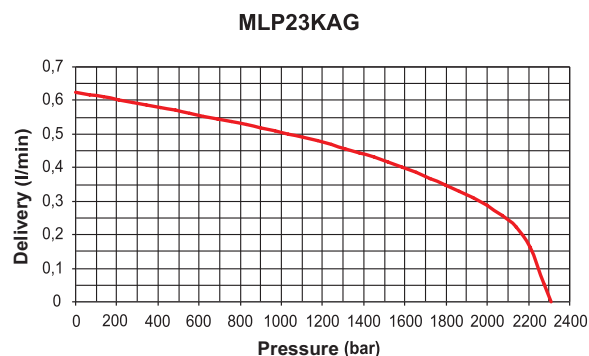
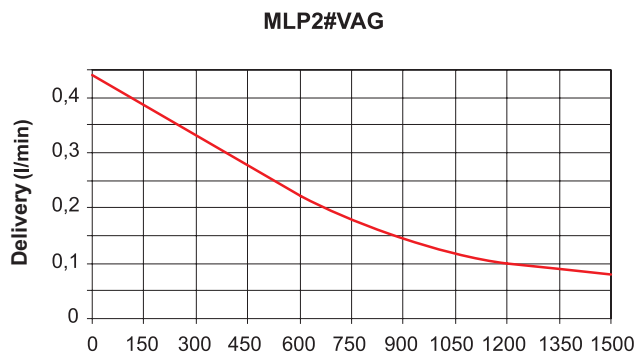
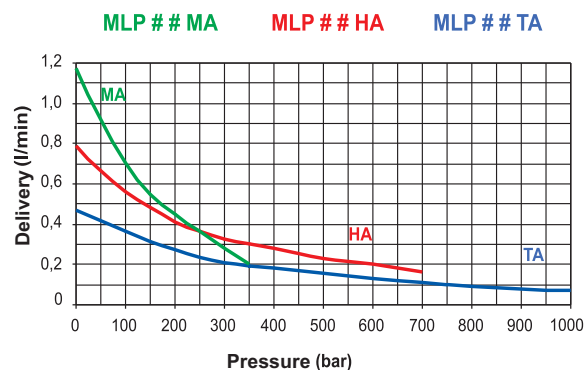
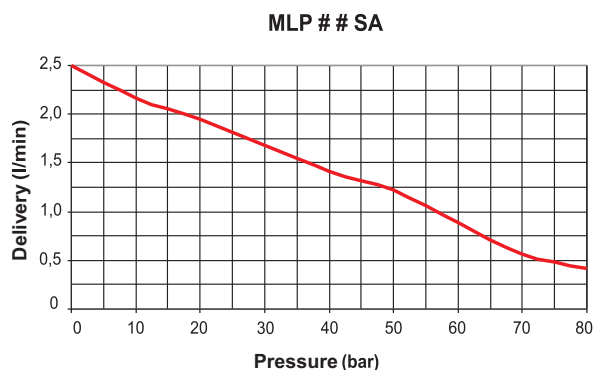
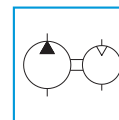
**p. 126**

## AIR-HYDRAULIC PUMPS FROM 80 TO 2100 BAR

HYDRAULIC PUMPS

### MODEL COMPOSITION CHART

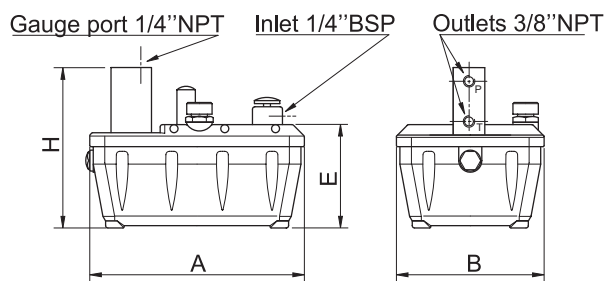
Description	MODEL	basic versions			
		MLP0	MLP1	MLP2	MLP4
<b>Tank</b>					
Tank 2,4 l (excluded <b>KAG</b> )	<b>1</b>	•	•	•	•
Tank 5 l (excluded <b>KAG</b> )	<b>2</b>	•	•	•	•
Tank 10 l	<b>3</b>	•	•	•	•
<b>Working pressure (Delivery)</b>					
Working pressure 2100 bar (0,62 - 0,24 l/min)	<b>KA</b>	-	-	•	-
Working pressure 1500 bar (0,44 - 0,08 l/min)	<b>VA</b>	-	-	•	-
Working pressure 1000 bar (0,5 - 0,1 l/min)	<b>TA</b>	-	-	•	-
Working pressure 700 bar (0,8 - 0,16 l/min)	<b>HA</b>	•	-	•	•
Working pressure 350 bar (1,2 - 0,2 l/min)	<b>MA</b>	•	•	•	•
Working pressure 100 bar (2,5 - 0,3l/min)	<b>SA</b>	•	•	•	•
<b>Options</b>					
Ready for air remote control	<b>B</b>	-	-	•	•
With gauge inserted on the pump (standard <b>VAG</b> and <b>KAG</b> )	<b>G</b>	•	-	-	-
With remote control (excluded <b>VAG</b> and <b>KAG</b> )	<b>R</b>	-	-	•	•



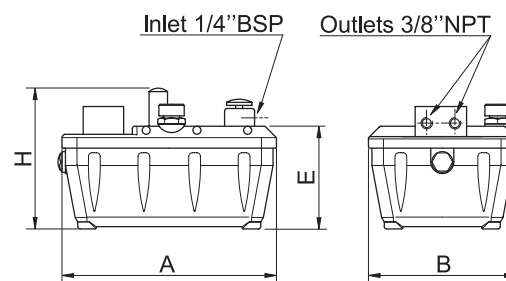
### MODEL CODING

Pump version	Tank capacity	Working pressure	Options
MLP2	1	HA	R

## AIR-HYDRAULIC PUMPS FROM 80 TO 1000 BAR



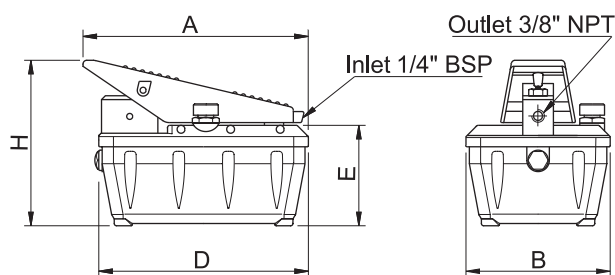
MLP0



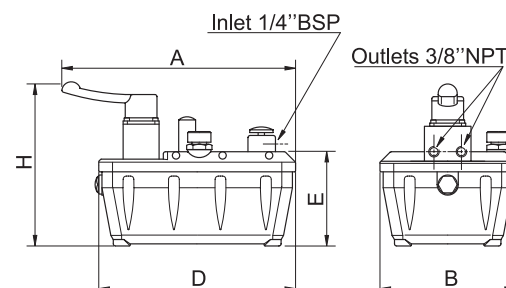
MLP1

### CHARACTERISTICS AND DIMENSIONS

Version	Suitable for cylinders	Oil tank litres	Usable oil volume litres	MODEL	Dimensions mm				Weight
					A	B	D	H	kg
With P and T block	according to the chosen on-line valve	2,4	1,9	MLP01##	280	190	136	201	4,7
		5	4	MLP02##	315	270	156	221	13,1
		10	8	MLP03##	420	385	156	221	20,5
With Cetop 03 base plate	according to the chosen valve	2,4	1,9	MLP11##	280	190	136	171	4,7
		5	4	MLP12##	315	270	156	191	13,1
		10	8	MLP13##	420	385	156	191	20,5



MLP2



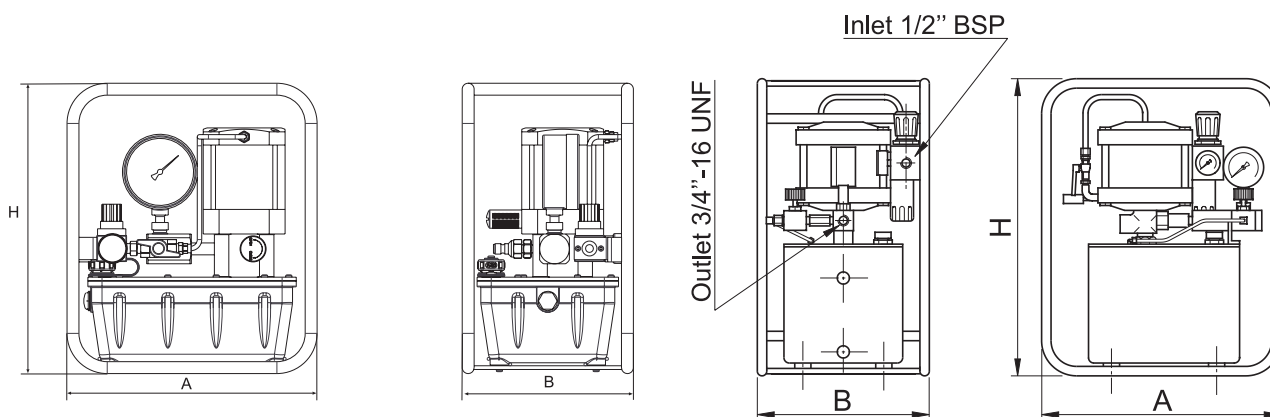
MLP4

### CHARACTERISTICS AND DIMENSIONS

Version	Suitable for cylinders	Oil tank litres	Usable oil volume litres	MODEL	Dimensions mm					Weight
					A	B	D	E	H	kg
3/3 control pedal valve	Single acting	2,4	1,9	MLP21##	300	190	280	136	220	5,5
		5	4	MLP22##	325	270	315	156	237	13,9
		10	8	MLP23##	420	385	410	156	237	21,3
4/3 manual control valve	Double acting	2,4	1,9	MLP41##	335	190	280	136	240	5,1
		5	4	MLP42##	350	270	315	156	257	13,5
		10	8	MLP43##	420	385	410	156	257	20,9

## AIR-HYDRAULIC PUMPS AT 1500 AND 2100 BAR

HYDRAULIC PUMPS



**MLP2#VAG**

**MLP23KAG**

### CHARACTERISTIC AND DIMENSIONS

Valve	Tank litres	Usable volume litres	MODEL	Dimensions mm					Weight kg
				A	B	D	E	H	
3/2 valve manual control	2,4	1,9	MLP21VAG	340	230	-	-	390	15
	5	4	MLP22VAG	495	325	-	-	500	25,7
	10	8	MLP23VAG	580	440	-	-	500	34,3

### CHARACTERISTIC AND DIMENSIONS

Valve	Tank litres	Usable volume litres	MODEL	Dimensions mm			Weight kg
				A	B	H	
3/2 valve manual control	10	8	MLP23KAG	495	325	580	30