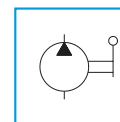


STEEL HAND PUMPS 400 - 700 - 1000 BAR



- Reservoir Capacity **0,42 - 0,8 l**
- Oil Delivery per Stroke in HP **1,0 - 2,3 cm³**
- Max working pressure **400 - 700 - 1000 bar**

FEATURES

Easy to use robust hand pumps in steel requiring moderate handle effort.

They are available in four models, with three pressure ratings, 400 - 700 - 1000 bar.

These pumps can also operate in vertical position with head downwards.

All models are equipped with:

- External adjustable safety valve
- Wide feet for ease of mounting
- Handle locking mechanism for ease of carrying

Available with 0,42 - 0,8 lt. reservoirs depending on the model.

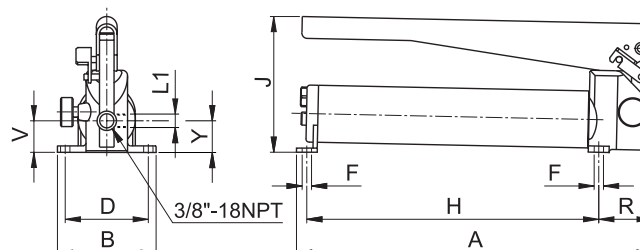
APPLICATIONS

These pumps are ideal to be used with small hydraulic tools and / or single acting cylinders that require a small amount of oil.



STANDARD

- All PS pumps have the head drilled to accept pressure gauge **G106L**.



SELECTION CHART

Max pressure bar	Oil delivery per stroke cm ³	Handle Effort N	For use with	Reservoir Capacity cm ³	Usable Oil Volume cm ³	MODEL	Dimensions mm									Weight kg	
							A	B	D	F	H	J	L1	R	V		Y
700	1,0	280	Single acting	420	300	PS100	340	95	80	9	280	130	1/4" NPT	50	32,5	32,5	3,2
1000		380				PS10010	280										
400	2,3	350		420	300	PS10004	340				280						
700		390		800	700	PS101	565				505						

MODEL CODE

PS	10	0	##
Series	Pump type	Reservoir capacity in litres	Pressure if other than 700 bar