

CSE GS TU

60-520 ton
Stroke 50 mm
700 bar

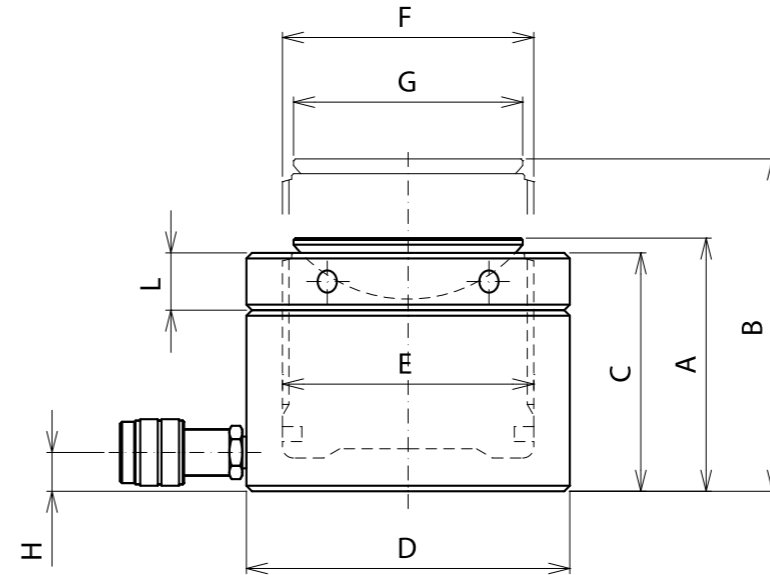
CSE GS TU
Series

**Single-acting cylinders
load return with lock nut
lowheight**



- Low height cylinders.
- Locking collar to hold the load on fully safety.
- Plunging version -overflow port functions as a stroke limiter.

- Anti-corrosion Nitox treatment.
- Maximum saddle tilt angle 3-5% - always keep a flat base before lifting.



CSE-GS



CAP/Force ton (kN)	STROKE mm	MODEL	SECTION cm ²	VOLUME cm ³	WEIGHT kg	DIMENSIONS in mm								
						A	B	C	D	E	F	G	H	L
60 /606,3	50	CSE-60/50-GS-TU-TA	86,6	433	15	125	175	119	140	105	Tr 105X4	96	19	28
100 /606,3	50	CSE-100/50-GS-TU-TA	145,27	726,35	26	137	187	129	175	135	Tr 136X6	124	21	31
160 /1588,9	45	CSE-160/45-GS-TU-TA	229,66	1033,47	44	148	193	139	220	170	Tr 170X6	150	27	40
200 /1984,7	45	CSE-200/45-GS-TU-TA	283,53	1275,885	57	155	200	145	245	190	Tr 190X6	170	30	43
260 /2541,4	45	CSE-250/45-GS-TU-TA	363,05	1633,725	74	159	204	148	275	215	Tr 215X6	200	32	44
400 /4007,9	45	CSE-400/45-GS-TU-TA	572,56	2576,52	134	178	223	167	350	270	Tr 270X6	250	39	45
500 /5114,3	45	CSE-500/45-GS-TU-TA	3287,8	14795,1	189	192	237	182	400	305	Tr 305X6	290	48	55

SPECIAL CYLINDERS ON REQUEST



Cylinders to lift structures.