

HYDRAULIC PUMPS WITH INDEPENDENT OUTLETS FROM F.P.T. ISO FLOW SERIES

700 bar
Single-speed
00.4 - 0.9 l/min. oil flow
20 to 100 l reservoirs

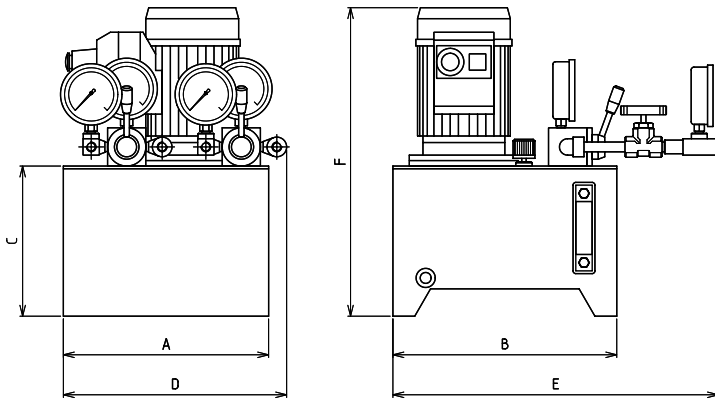
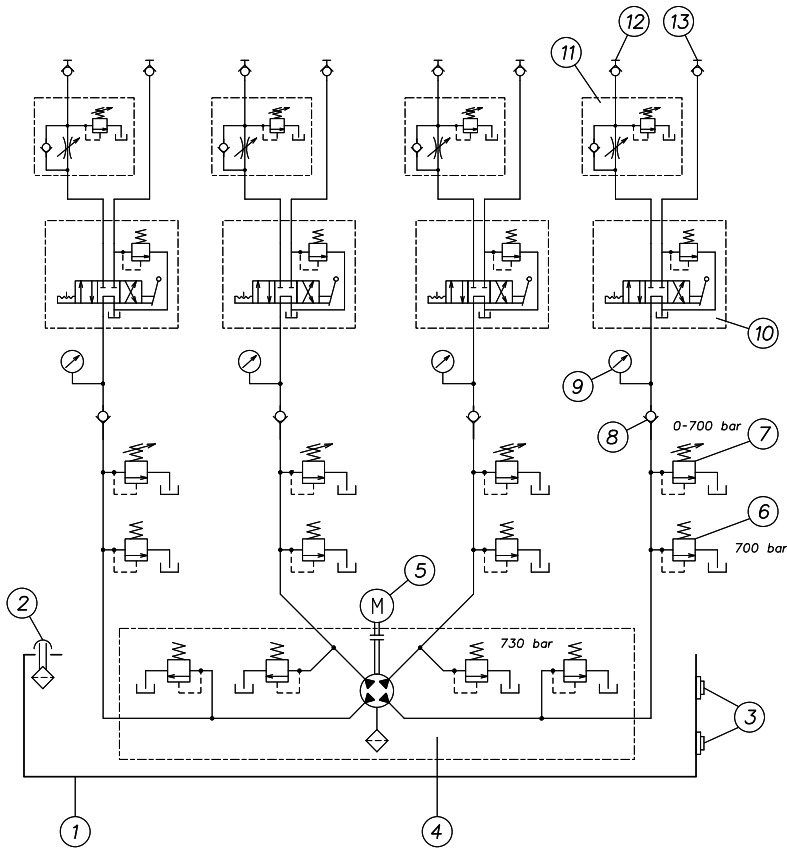
FPT
ISO FLOW
Series

Hydraulic pump with independent outlets

For synchronous lifting during the lifting and lowering phases $\pm 3\%$ of precision on the nominal stroke



- Axial piston pumps, single-speed, with 2, 4 or 6 independent outlets and equal flow rate that remains constant even when the load varies.
- Synchronous load control during the lifting phase.
- Each outlet can be equipped with a flow control valve to control the load during the lowering phase. If a control is required on the up and down phase, an FPT synchronous system controlled by a PLC can be used (see page 74).
- 20 to 100-litre reservoirs can be used to operate a wide range of medium and high tonnage cylinders.
- Example of hydraulic pump configuration to operate 4 double-acting cylinders: F.P.T. 4X0.4-ME2-M-EV4/3-60-SP



ISO FLOW



Centralina a 4 mandate indipendenti con valvole overcenter singole (700 bar) per sincronismo del carico sia in fase di salita sia di discesa.

MODEL	MAXIMUM PRESSURE	FLOW PER UTILIZATION	MOTOR	KW RPM	RESERVOIR CAPACITY	DIMENSIONS in mm						WEIGHT
	bar					litres	A	B	C	D	E	
FPT 2x0.9 - ME2	700	0.9	THREE-PHASE 2-POLES	2.2 / 2850	20	376	410	275	430	560	565	83
FPT 4x0.4 - ME2		0.4	THREE-PHASE 2-POLES	2.2 / 2850	60	516	700	275	516	850	565	140
FPT 6x0.7 - ME4		0.7	THREE-PHASE 4-POLES	5.5 / 1450	100	586	900	275	775	900	625	240 *

* Excluding oil.