

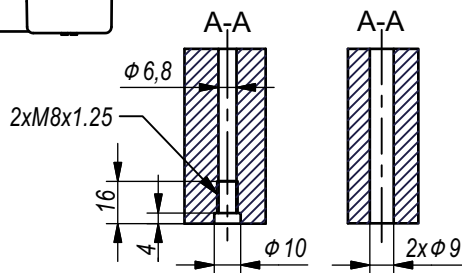
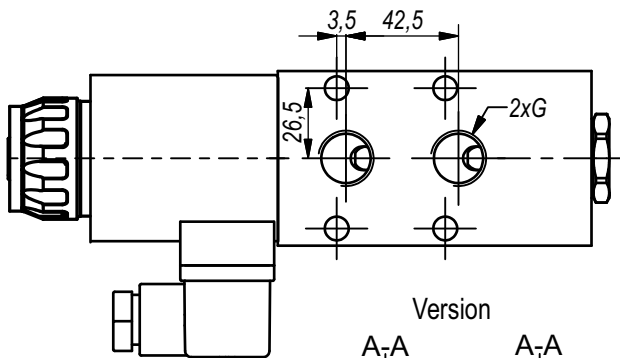
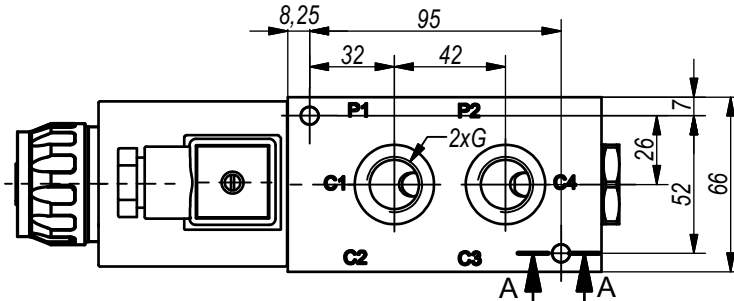
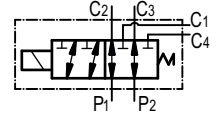
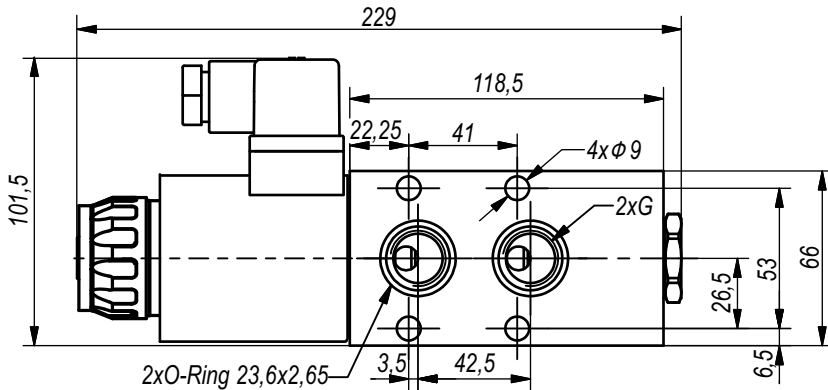
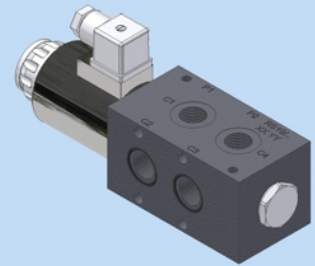


**Hidro  
Pnevmo  
Tehnika**

3, Vojeli St., Kazanlak, Bulgaria  
Tel.: +359 431/ 62 228  
e-mail : info@hpt-bg.com  
www.hpt-bg.com

## SOLENOID OPERATED DIRECTIONAL CONTROL VALVE

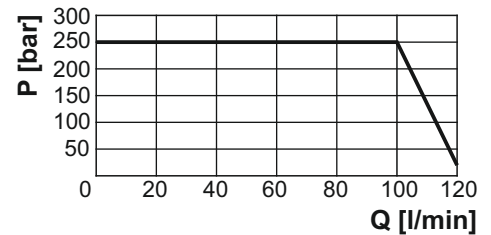
**. RS10 .. / .. -2**



**Note:**

- All performances and calibration are carried out by using hydraulic oil with viscosity approx 46 cSt at 50 °C.
- Tightening torque for the solenoid - 30 N.m.

**Operating limit**



Internal leakage - 30 cm<sup>3</sup>/min  
mineral oil with 46 cSt viscosity  
and at 100 bar pressure

**TECHNICAL DATA**

| TECHNICAL DATA              |                    |                      |
|-----------------------------|--------------------|----------------------|
| General                     |                    |                      |
| Ambient temperature         | °C                 | -20...+50            |
| Hydraulic                   |                    |                      |
| Maximal pressure            | bar                | 250                  |
| Maximal flow rate           | L/min              | 100                  |
| Working fluid - mineral oil |                    |                      |
| - viscosity                 | mm <sup>2</sup> /s | 10...100             |
| - filtration level          | µm                 | 25 or better         |
| - temperature               | °C                 | -20...+80            |
| Power supply                |                    |                      |
| Voltage                     | V DC               | 12±5%<br>24±5%       |
|                             | V AC               | 110/50Hz<br>220/50Hz |

**ORDERING CODE**

**RS10 .. / 12 - 2** Series

|   |      |  |   |  |
|---|------|--|---|--|
| Number of sections: <b>1...4</b><br>One section: <b>Omit</b><br>(for 2...4 sections see page 1.8) | Type | Port threads "G" - code<br><b>G1/2" - omit</b> | Operating voltage - code:<br><b>12V / 00Hz - 12</b><br><b>24V / 00Hz - 24</b><br><b>110V/50Hz - 110</b><br><b>220V/50Hz - 220</b> | Version - code:<br><b>2xM8 - omit</b><br><b>2xφ9 - B</b> |
|---|------|--|---|--|