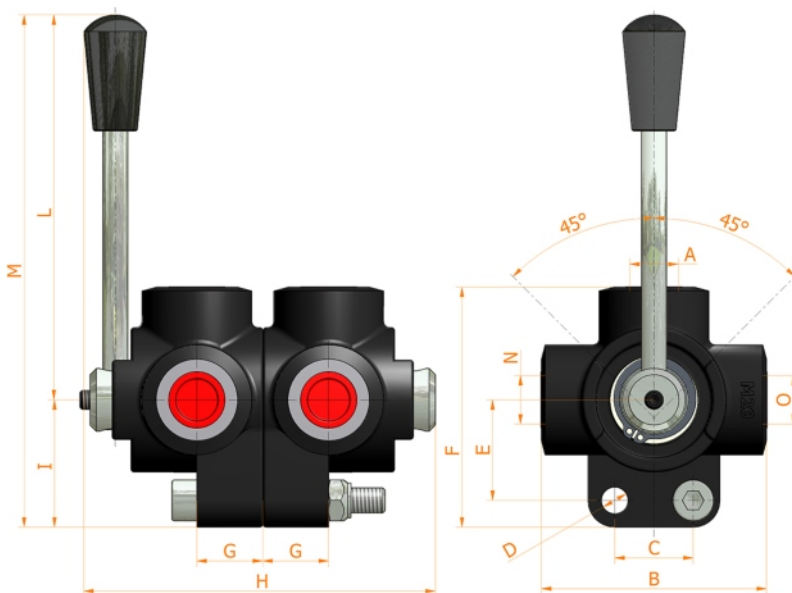
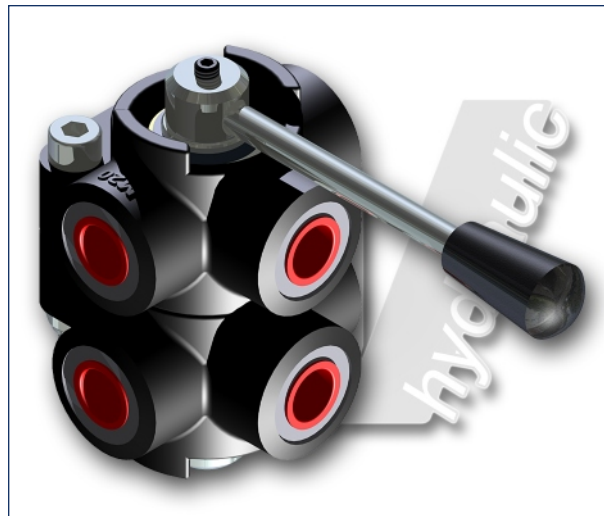
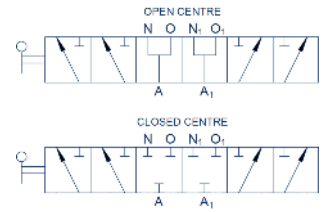


D6 SAE

6 ways flow divider



Specifications:

- Iron cast body
- White zinc plated external parts
- Standard colour black

| O-N-A SAE | FLOW liters/min | PRESSURE BAR | B mm | C mm | D mm | E mm | F mm | G mm | H mm | L mm | M mm | MASS KG | CODE OF OPEN CENTRE | CODE OF CLOSED CENTRE |
|-------------|-----------------|--------------|------|------|------|------|------|------|------|------|-------|---------|---------------------|-----------------------|
| 3/4 - 16 | 60+60 | 350 | 70 | 25 | 8,5 | 32 | 75,5 | 21 | 112 | 115 | 155,5 | 1,500 | 7003.0200 | 7003.0207 |
| 7/8 - 14 | 90+90 | 350 | 80 | 32 | 8,5 | 36 | 86 | 24 | 124 | 115 | 161 | 2,300 | 7003.0201 | 7003.0208 |
| 1 1/16 - 12 | 120+120 | 350 | 90 | 32 | 10,5 | 42 | 98,5 | 26 | 132 | 115 | 168,5 | 3,500 | 7003.0202 | 7003.0209 |
| 1 5/16 - 12 | 200+200 | 300 | 98 | 32 | 10,5 | 50 | 110 | 31 | 152 | 115 | 176,5 | 5,300 | 7003.0203 | 7003.0210 |
| | | | | | | | | | | | | | | |

HV Hydraulic S.r.l.

www.hvhydraulic.com - info@hvhydraulic.com
Via dell'Agricoltura, 162 - Loc. Castelletto di Serravalle - 40053 Valsamoggia (BO) Italy - Tel. +39 051 670.50.11 - Fax +39 051 670.53.74

© ALL RIGHTS RESERVED