



## ADL106... FLOW DIVERSION VALVES



The 6 way flow diversion valves are special solenoid valves which allow the simultaneous connection of two systems.

In order to obtain valve's working at pressure of 250 bar up to 320 bar (external drainage) the G 1/8" BSP plug must be removed to Y connector.

Max. pressure (without drainage, Y plugged)	250 bar
Max. pressure (external drainage)	320 bar
Max. flow	80 l/min
Fluid viscosity	10 ÷ 500 mm <sup>2</sup> /s
Fluid temperature	-25°C ÷ 75°C
Ambient temperature	-25°C ÷ 60°C
Max. contamination level	class 10 in accordance with NAS 1638 with filter $\beta_{25} \geq 75$
Weight	3,6 Kg

### ADL106...

"A16" DC Coils	CH. I PAGE 74
STANDARD CONNECTORS	CH. I PAGE 20

### ORDERING CODE

<b>ADL10</b>	Flow diversion valves NG10
<b>6</b>	No. of way
<b>J</b>	Connectors 3/4" BSP
<b>I</b>	Without drainage Y connector plugged
<b>*</b>	Voltage (see table 1)
<b>**</b>	Variants (see table 2)
<b>1</b>	Serial No.

**TAB.1 - A16 COIL**

DC VOLTAGE **	
<b>L</b>	12V
<b>M</b>	24V
<b>N</b>	48V*
<b>P</b>	110V*
<b>Z</b>	102V*
<b>X</b>	205V*
<b>W</b>	Without DC coil

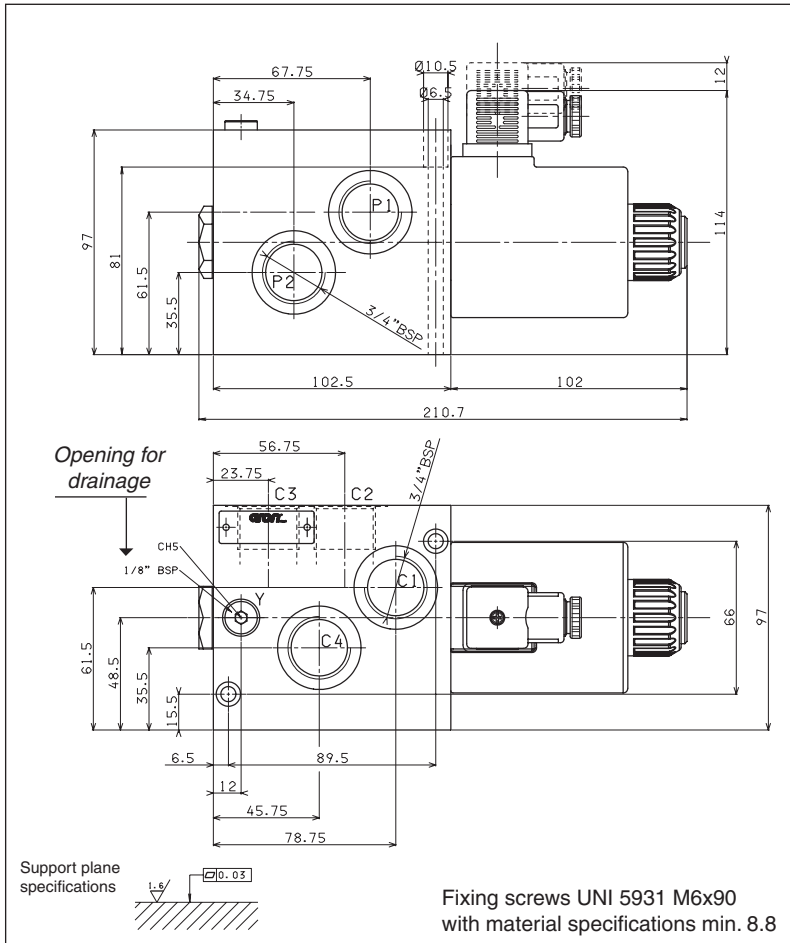
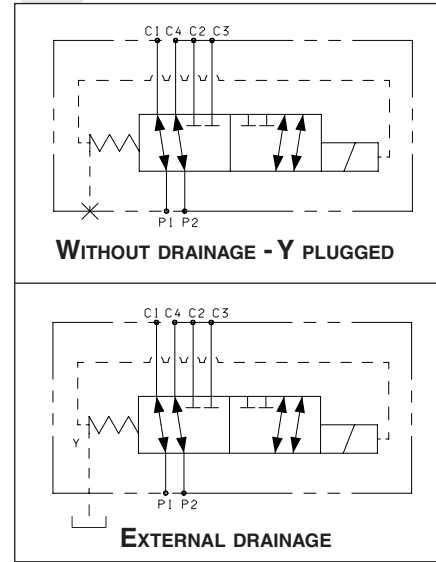
115Vac/50Hz  
120Vac/60Hz  
with rectifier

230Vac/50Hz  
240Vac/60Hz  
with rectifier

Voltage codes are not stamped on the plate, they are readable on the coils.

\* Special voltage  
\*\* Technical data see Ch I • 74

**DRAINS AND HYDRAULIC SYMBOLS**



**TAB.2 - VARIANTS**

VARIANT	CODE
No variant (without connectors)	S1(*)
Viton	SV(*)
Emergency button	ES(*)
Rotary emergency button	P2(*)

Other variants available on request.

(\*) Coils with Hirschmann and AMP Junior connection supplied without connectors. The connectors can be ordered separately, Ch. I • 20.

**PRESSURE DROPS**

