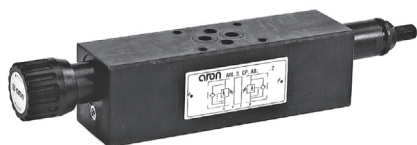


AM3CP... MODULAR BACK PRESSURE VALVE CETOP 3



AM3CP...

CMP.10... CH. VII PAGE 30

SCREWS AND STUDS CH. IV PAGE 21

AM3CP type back pressure valves are damped in-line direct acting pressure relief valves fitted with bypass non-return valves.

Adjustment within the range 2 ÷ 320 bar is by means of a grub screw or a plastic knob, on ports A or B (single) or AB (double).

The cartridge is the direct acting type CMP10.

These valves are especially used on vertically working cylinders with dragging loads.

Max. operating pressure	350 bar
Setting ranges:	spring 1 max. 50 bar
	spring 2 max. 150 bar
	spring 3 max. 320 bar
Max. flow	40 l/min
Hydraulic fluids	Mineral oils DIN 51524
Fluid viscosity	10 ÷ 500 mm ² /s
Fluid temperature	-25°C ÷ 75°C
Ambient temperature	-25°C ÷ 60°C
Max. contamination level	class 10 in accordance with NAS 1638 with filter $\beta_{25} \geq 75$
Weight AM.3.CP.A/B...	2 Kg
Weight AM.3.CP.AB...	2,7 Kg

ORDERING CODE

AM

Modular valve

3

CETOP 3/NG6

CP

Back pressure valve

**

Control on lines A / B / AB

*

Type of adjustment

M = Plastic knob

C = Grub screw

*

Setting ranges

1 = max. 50 bar (white spring)

2 = max. 150 bar (yellow spring)

3 = max. 320 bar (green spring)

**

00 = No variant

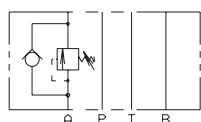
V1 = Viton

3

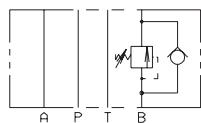
Serial No.

For the minimum permissible setting pressure depending on the spring, see minimum pressure setting curve.

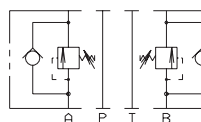
HYDRAULIC SYMBOLS



AM3CPA

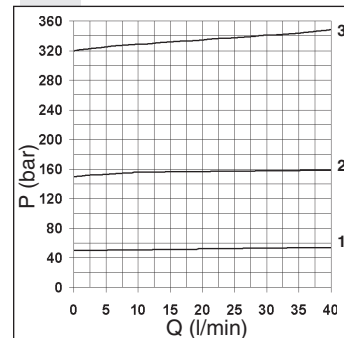


AM3CPB

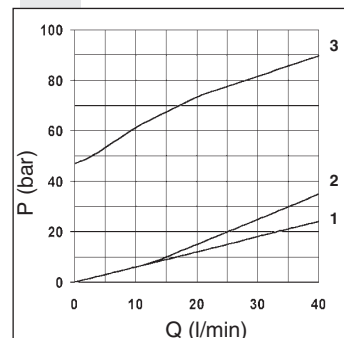


AM3CPAB

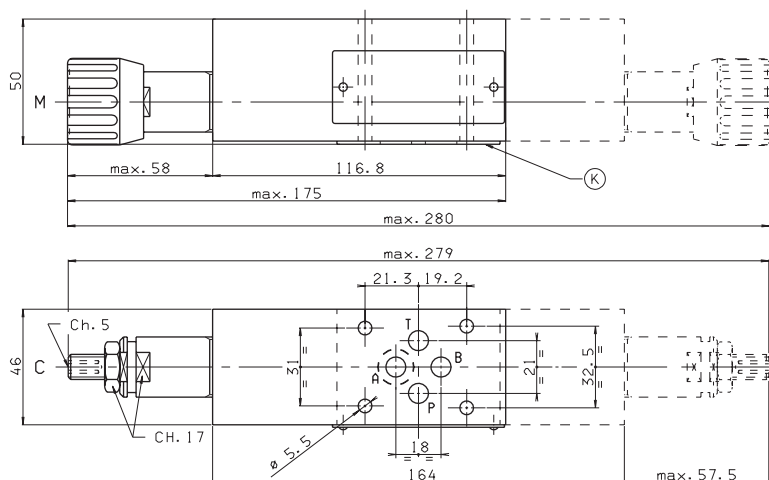
PRESSURE - FLOW RATE



MINIMUM SETTING PRESSURE



OVERALL DIMENSIONS



K = OR plate

Type of adjustment

M Plastic knob

C Grub screw

Support plane specifications

