

AM3RD / AM3SD...

SCREWS AND STUDS

CH. IV PAGE 21

ORDERING CODE

AM

Modular valve

3

CETOP 3/NG6

**

RD = Direct pressure reducing valve

SD = Direct pressure sequencing valve

*

Control on lines

AM3RD version = A / P

AM3SD version = P

*

1 = Positive overlap

2 = Negative overlap

Omit for version AM3SD

*

Type of adjustment

C = Grub screw

V = Handwheel

*

Setting ranges

1 = max. 2 ÷ 30 bar (white spring)

2 = max. 10 ÷ 120 bar (yellow spring)

3 = max. 60 ÷ 250 bar (green spring)

**

00 = No variant

V1 = Viton

4

Serial No.

AM3RD... / AM3SD... MODULAR PRESSURE

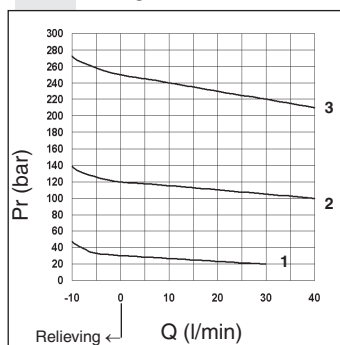
REDUCING / PRESSURE SEQUENCING VALVES CETOP 3

AM3RD and AM3SD valves are direct acting spool type pressure reducing and sequencing units, respectively, with one end pre-loaded by means of a spring on the other end exposed to the hydraulic pressure.

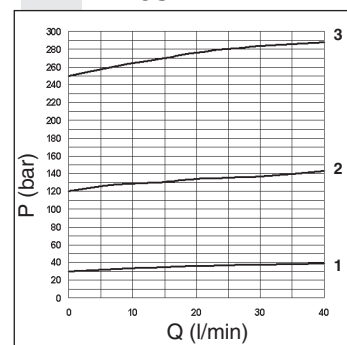
The drainage is drained within the valve to port T. Pressure is adjustable by means of a screw and locknut, or of a handwheel. Three types of springs allow adjustment within the range 2 ÷ 250 bar. The pressure reducing valves are available in two versions: with positive overlap (suitable with low flow rate) and with negative overlap to obtain a greater pressure reinstatement speed.

Max. operating pressure: port P	350 bar
Max. pressure adjustable	250 bar
Setting ranges:	spring 1 2 ÷ 30 bar
	spring 2 10 ÷ 120 bar
	spring 3 60 ÷ 250 bar
Max. flow	40 l/min
Internal drainage RD:	
Positive overlap version	0,5 l/min
Negative overlap version	2 l/min
Hydraulic fluids	Mineral oils DIN 51524
Fluid viscosity	10 ÷ 500 mm ² /s
Fluid temperature	-25°C ÷ 75°C
Ambient temperature	-25°C ÷ 60°C
Max. contamination level	class 10 in accordance with NAS 1638 with filter $\beta_{25} \geq 75$
Weight	1,3 Kg

PRESSURE - FLOW RATE AM3RD

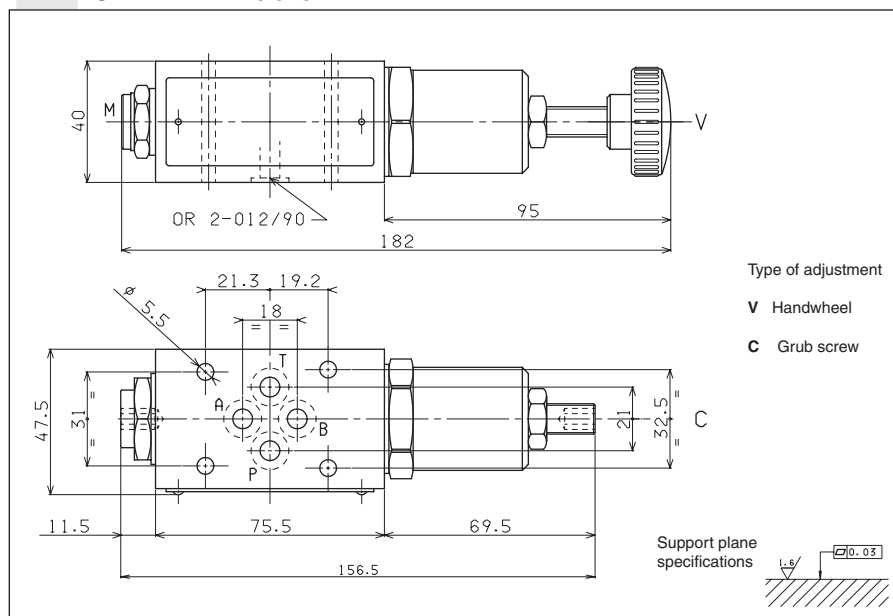


PRESSURE - FLOW RATE AM3SD



The fluid used is a mineral based oil with a viscosity of 46 mm²/sec at 40 degrees C. The tests have been carried out at with a fluid temperature of 40 degrees C.

OVERALL DIMENSIONS



Type of adjustment

V Handwheel

C Grub screw

HYDRAULIC SYMBOLS

