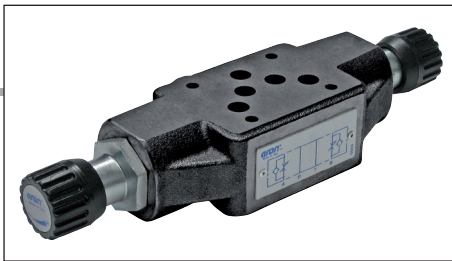


# AM5QF... MODULAR FLOW REGULATOR CETOP 5



AM5QF...

SCREWS AND STUDS

CH. IV PAGE 36

AM.5.QF type one way non-compensated throttle valve are fitted with an O-Ring mounting plate which allows its assembly for either input or output regulation. Adjustment is obtained by means of a grub screw or a plastic knob. They are available in the four regulating configurations shown in the hydraulic diagrams.

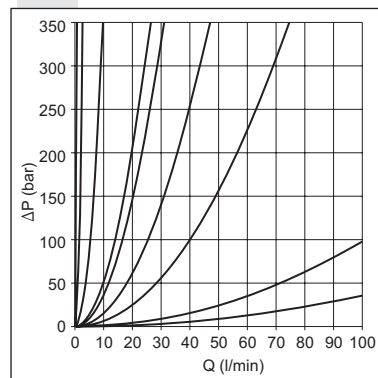
These valves are supplied with related hydraulic scheme. In case of inversion of rated flow direction, turn valve 180° right or left (attention: in this case the label will appear upside down with A and B inverted).

Max. operating pressure	350 bar
Flow rate regulation	on 9 screw turns
Max. flow	100 l/min
Hydraulic fluids	Mineral oils DIN 51524
Fluid viscosity	10 ÷ 500 mm <sup>2</sup> /s
Fluid temperature	-25°C ÷ 75°C
Ambient temperature	-25°C ÷ 60°C
Max. contamination level	class 10 in accordance with NAS 1638 with filter $\beta_{25} \geq 75$
Weight	3,5 Kg

## ORDERING CODE

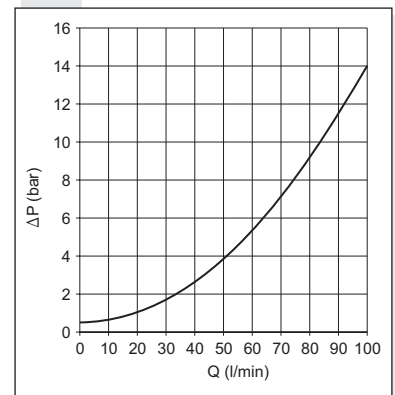
<b>AM</b>	Modular valve
<b>5</b>	CETOP 5/NG10
<b>QF</b>	Non compensated throttle valve
<b>**</b>	Control on lines <b>A / B / P / AB</b>
<b>*</b>	Type of adjustment <b>M</b> = Plastic knob <b>C</b> = Grub screw
<b>**</b>	<b>00</b> = No variant <b>V1</b> = Viton
<b>5</b>	Serial No.

## FLOW RATE



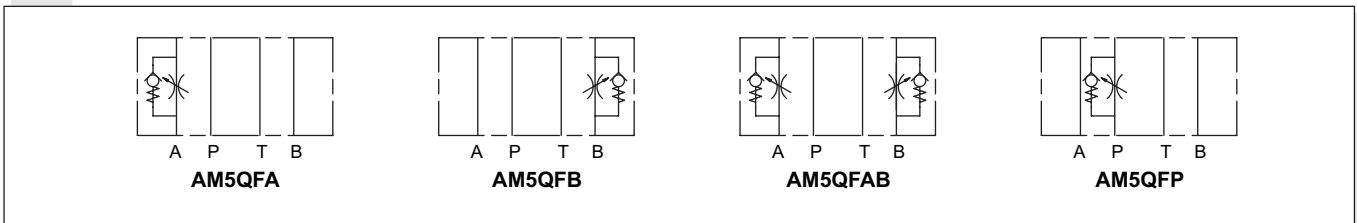
Each curve represents the flow rate adjustment for each screw turns, starting from the closed position.

## FREE FLOW TOWARDS CHECK VALVE



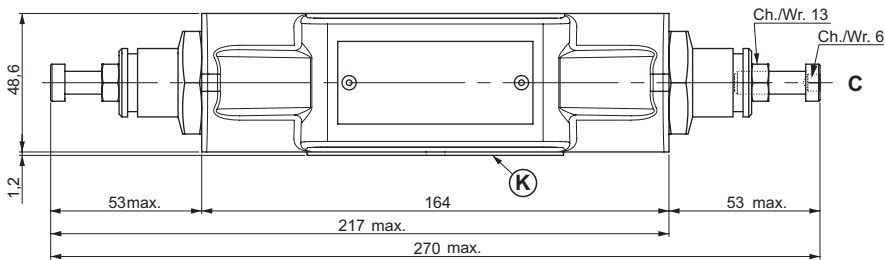
4

## HYDRAULIC SYMBOLS

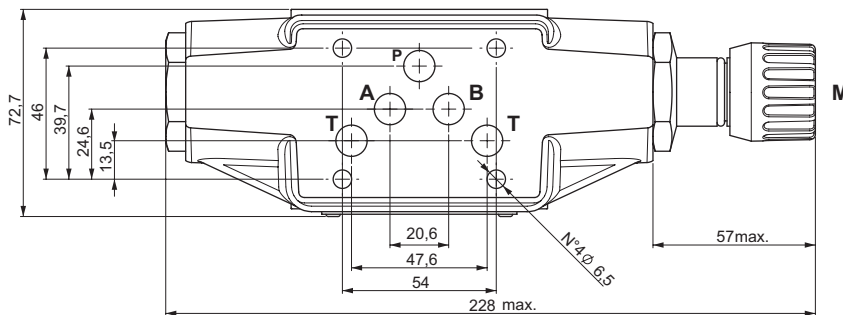


**OVERALL DIMENSIONS**

**AM5QF / A / B / AB**

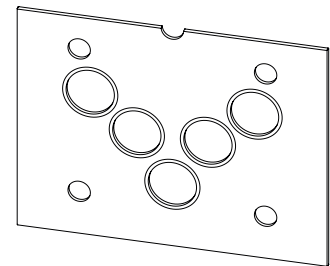


per versioni con regolazione su due vie (AB)  
 versions with double regulation (AB)



per versioni con regolazione su una singola via (A o B)  
 versions with single regulation (A or B)

**K = OR plate**

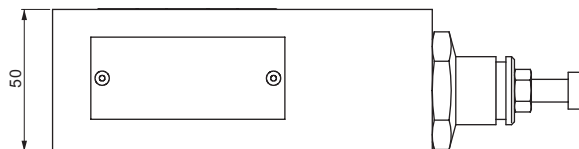
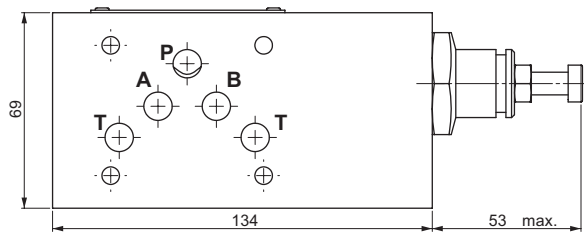


Type of adjustment

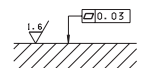
**M** Plastic knob

**C** Grub screw

**AM.5.QF. / P**



Support plane specifications



**4**