



## AM5RGT...

SCREWS AND STUDS

CH. IV PAGE 36

# AM5RGT... MODULAR VALVES FOR REGENERATIVE CIRCUIT CETOP 5



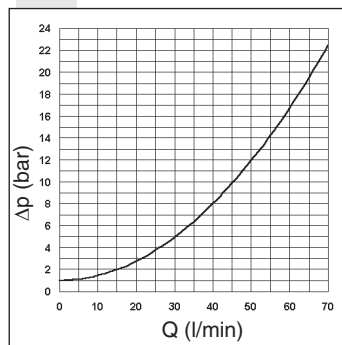
This modular system produces a regenerative circuit to increasing the actuator (differential cylinder) exit speed as shown in the diagram. In particular, if a cylinder is used with a 2:1 ratio for operating surfaces, the exit and re-entry speeds are the same.

Max. operating pressure	350 bar
Max. flow at port A/B/P/T	70 l/min
Hydraulic fluids	Mineral oils DIN 51524
Fluid viscosity	10 ÷ 500 mm <sup>2</sup> /s
Fluid temperature	-25°C ÷ 75°C
Ambient temperature	-25°C ÷ 60°C
Max. contamination level	class 10 in accordance with NAS 1638 with filter $\beta_{25} \geq 75$
Weight	2,1 Kg

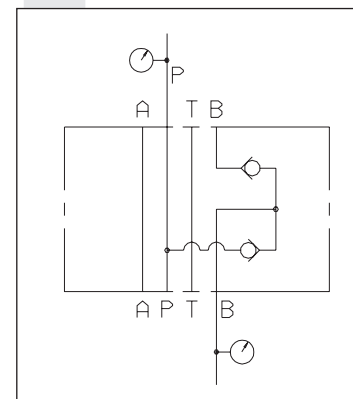
## ORDERING CODE

<b>AM</b>	Modular valve
<b>5</b>	CETOP 5/NG10
<b>RGT</b>	For regenerative circuit
<b>A</b>	Size of check valves 1/2" BSP
<b>1</b>	Opening pressure 1 bar
<b>**</b>	<b>00</b> = No variant <b>V1</b> = Viton
<b>1</b>	Serial No.

## PRESSURE DROPS B → P



## HYDRAULIC SYMBOL



## OVERALL DIMENSIONS

