

AM5SH... MODULAR SHUTTLE VALVES CETOP 5



AM5SH...

SH.03... BFP CARTRIDGE CATALOGUE

SCREWS AND STUDS CH. IV PAGE 36

Modular valves type AM5SH are actuator load pressure selecting units, as they are fitted with an integral shuttle valve cartridge which allows taking of the highest pressure signal to the external port via displacement of a ball. They are usually employed to signal the actuator load to the pressure compensator of a load sensing pump, or for the command of fail-safe brakes. For seat overall dimensions see cartridge shuttle type SH03.

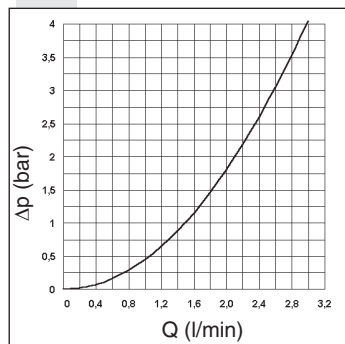
| | |
|-----------------------------|---|
| Max. operating pressure | 350 bar |
| Max. flow at the cartridge | 3 l/min |
| Max. flow at ports A/B/P/T | 80 l/min |
| Hydraulic fluids | Mineral oils DIN 51524 |
| Fluid viscosity | 10 ÷ 500 mm ² /s |
| Fluid temperature | -25°C ÷ 75°C |
| Ambient temperature | -25°C ÷ 60°C |
| Max. contamination level | class 10 in accordance with NAS 1638 with filter $\beta_{25} \geq 75$ |
| Weight | 2,1 Kg |
| Cartridge tightening torque | 20÷30 Nm/2÷3 Kgm |

4

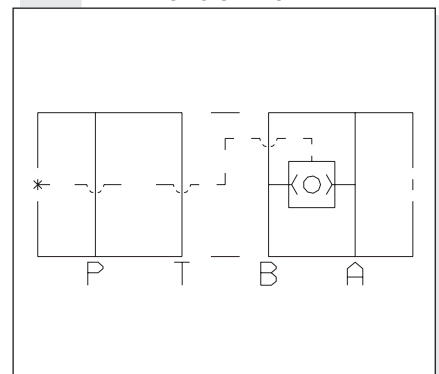
ORDERING CODE

- AM** Modular valve
- 5** CETOP 5/NG10
- SH** Cartridge shuttle
- **** **00** = No variant
V1 = Viton
- 1** Serial No.

PRESSURE DROPS (Δp) ON THE SHUTTLE VALVE



HYDRAULIC SYMBOL



OVERALL DIMENSIONS

