

AM5VM... / AM5VI...

CMP20... BFP CARTRIDGE CATALOGUE

CMP30... BFP CARTRIDGE CATALOGUE

SCREWS AND STUDS CH. IV PAGE 36

AM5VM... / AM5VI... MODULAR

MAX. PRESSURE VALVES CETOP 5



AM5VM type pressure regulating valves are available within operating range $7 \div 350$ bar. Adjustment is by means of a grub screw or a plastic knob. They are three basic versions:

AM5VM, on single A or B lines, and on double A and B lines, with drainage on T; **AM5VMP**, on single P line, with drainage on T; **AM5VI**, on single A or B lines, and on double A and B lines, with crossed drainage on either A or B (see hydraulic symbols). Three spring types can be fitted on all versions, with calibrated ranges as shown in the unit specifications.

Piloted operation cartridge type CMP30 is used on versions AM5VM and AM5VM.P (see ordering code), while on version AM5VI direct acting cartridge type CMP20 is used instead.

For the minimum permissible setting pressure depending on the spring, see the minimum pressure setting curve.

Max. operating pressure	350 bar
Setting ranges:	spring 1 50 bar
	spring 2 140 bar
	spring 3 350 bar
Max. flow	80 l/min
Hydraulic fluids	Mineral oils DIN 51524
Fluid viscosity	$10 \div 500 \text{ mm}^2/\text{s}$
Fluid temperature	$-25^\circ\text{C} \div 75^\circ\text{C}$
Ambient temperature	$-25^\circ\text{C} \div 60^\circ\text{C}$
Max. contamination level	class 10 in accordance with NAS 1638 with filter $\beta_{25} \geq 75$
Weight AM.5.VM.A/B/P...	2,5 Kg
Weight AM.5.VM.AB...	2,7 Kg
Weight AM.5.VI.A/B...	5,7 Kg
Weight AM.5.VI.AB...	5,9 Kg

4

ORDERING CODE

AM

Modular valve

5

CETOP 5/NG10

**

VM = Maximum pressure

VI = Maximum crossline relief

**

Adjustment on the lines

AM.5.VM Version = **A / B / P / AB**

AM.5.VI Version = **A / B / AB**

*

Type of adjustment

M = Plastic knob

C = Grub screw

*

Setting ranges at port A/B/P

CMP 30 CMP 20

(AM5VM only) (AM5VI only)

1 = max. 50 bar 1 = max. 50 bar (white spring)

2 = max. 140 bar 2 = max. 140 bar (yellow spring)

3 = max. 350 bar 3 = max. 250 bar (green spring)

*

Setting ranges at port B

Omit if the setting is same as that at port A

CMP 30 CMP 20

(AM5VM only) (AM5VI only)

1 = max. 50 bar 1 = max. 50 bar (white spring)

2 = max. 140 bar 2 = max. 140 bar (yellow spring)

3 = max. 350 bar 3 = max. 250 bar (green spring)

**

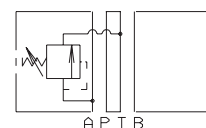
00 = No variant

V1 = Viton

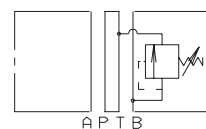
3

Serial No.

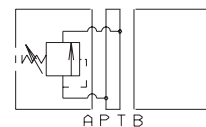
HYDRAULIC SYMBOLS



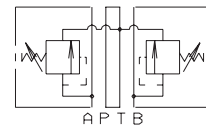
AM5VMA



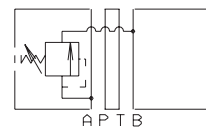
AM5VMB



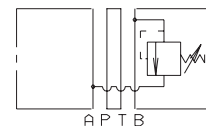
AM5VMP



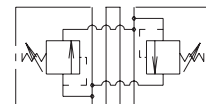
AM5VMAB



AM5VIA

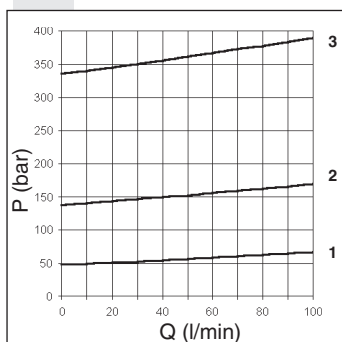


AM5VIB

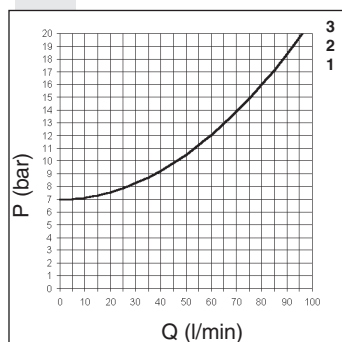


AM5VIAB

PRESSURE - FLOW RATE FOR CMP30

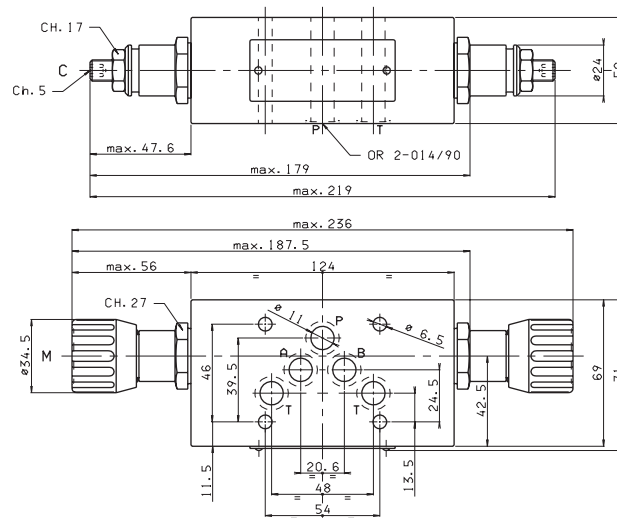


MINIMUM SETTING PRESSURE FOR CMP30



OVERALL DIMENSIONS

AM5VMAB...

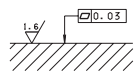


Type of adjustment

M Plastic knob

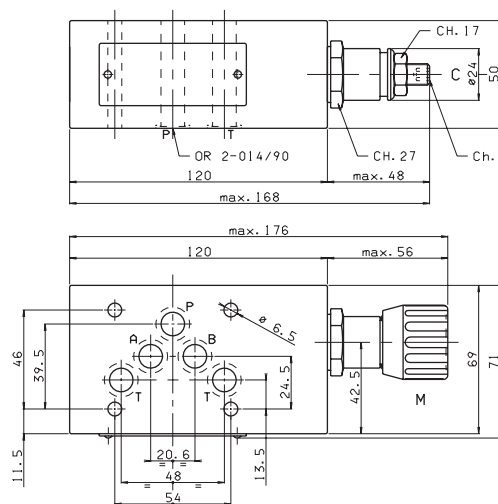
C Grub screw

Support plane specifications



4

AM5VMP...

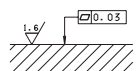


Type of adjustment

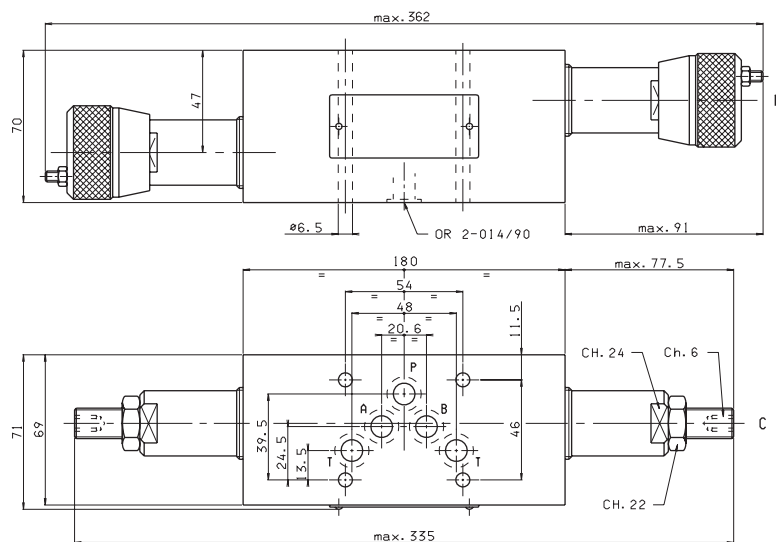
M Plastic knob

C Grub screw

Support plane specifications



AM5VIAB...



Type of adjustment

M Plastic knob

C Grub screw

Support plane specifications

