

AM66... MODULAR COMPENSATED FLOW CONTROL ASSEMBLY CETOP 3



This is an intermediate block for modular mounting of one or two flow rate regulators type QC.3...

The flow regulator type QC3* must be ordered separately.

Max. operating pressure	320 bar
Hydraulic fluids	Mineral oils DIN 51524
Fluid viscosity	10 ÷ 500 mm ² /s
Fluid temperature	-25°C ÷ 75°C
Ambient temperature	-25°C ÷ 60°C
Max. contamination level	class 10 in accordance with NAS 1638 with filter $\beta_{25} \geq 75$
Weight	1,3 Kg

AM.66...

QC32... CH. III PAGE 2

QC33... CH. III PAGE 3

SCREWS AND STUDS CH. IV PAGE 21

ORDERING CODE

AM

Modular valve

66

Size

**

Control on lines

A / B / P / PT* / AB

For T / A1 / B1 / A1B1 versions see table "Hydraulic symbols"

**

00 = No variant

V3 = regulators for three-way QC33 (only with adjustment of P)

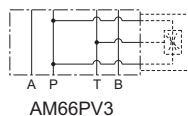
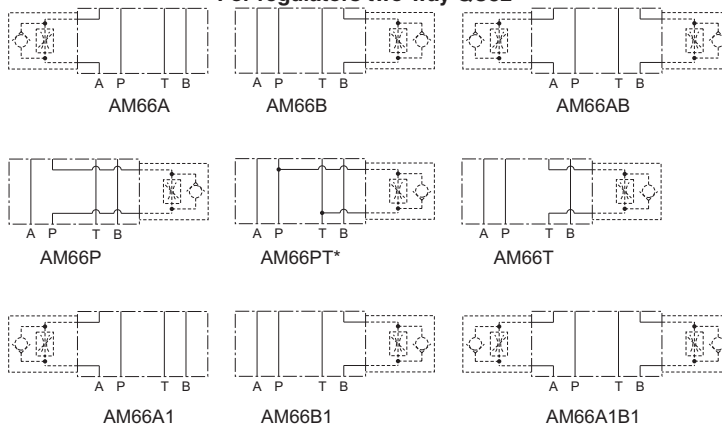
V1 = Viton

3

Serial No.

HYDRAULIC SYMBOLS

For regulators two-way QC32



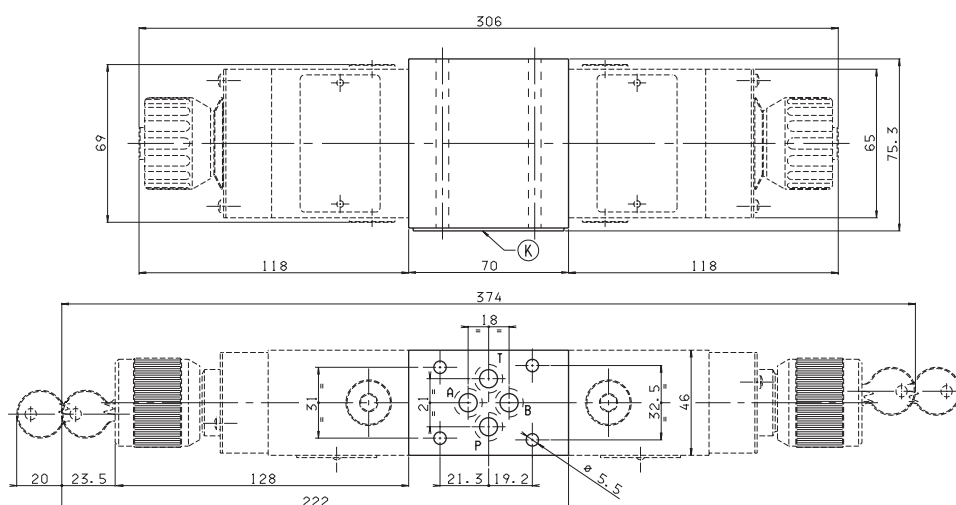
For regulators for three-way QC33

PT * = From line towards exhaust (**P** → **T** drain)

• In order to obtain versions with regulation on **T**, the AM66P regulator carrying block should be turned by 180°.

• In order to obtain versions **A1**, **B1** and **A1B1** the AM66A, AM66B or AM66AB regulators carrying block should be turned by 180°.

OVERALL DIMENSIONS



K = OR plate

Support plane specifications

