

AM88... MODULAR COMPENSATED FLOW CONTROL ASSEMBLY CETOP 5



This is an intermediate block (AM.88) for modular mounting of one or two compensated flow rate regulators QC3...

The flow regulator type QC32 must be ordered separately.

Max. operating pressure	320 bar
Hydraulic fluids	Mineral oils DIN 51524
Fluid viscosity	10 ÷ 500 mm ² /s
Fluid temperature	-25°C ÷ 75°C
Ambient temperature	-25°C ÷ 60°C
Max. contamination level	class 10 in accordance with NAS 1638 with filter $\beta_{25} \geq 75$
Weight	2,75 Kg

AM88...

QC32... CH. III PAGE 2

SCREWS AND STUDS CH. IV PAGE 36

ORDERING CODE

AM

Modular valve

88

Size

**

Control on lines

A / B / P / T / PT* / AB

For A1 / B1 / A1B1

see table "Hydraulic symbols"

**

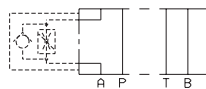
00 = No variant

V1 = Viton

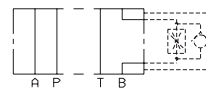
3

Serial No.

HYDRAULIC SYMBOLS



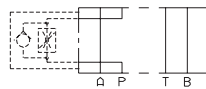
AM88A



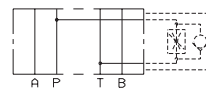
AM88B



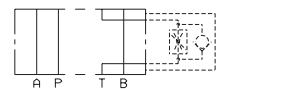
AM88AB



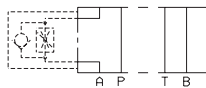
AM88P



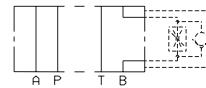
AM88PT*



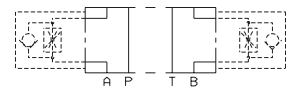
AM88T



AM88A1



AM88B1



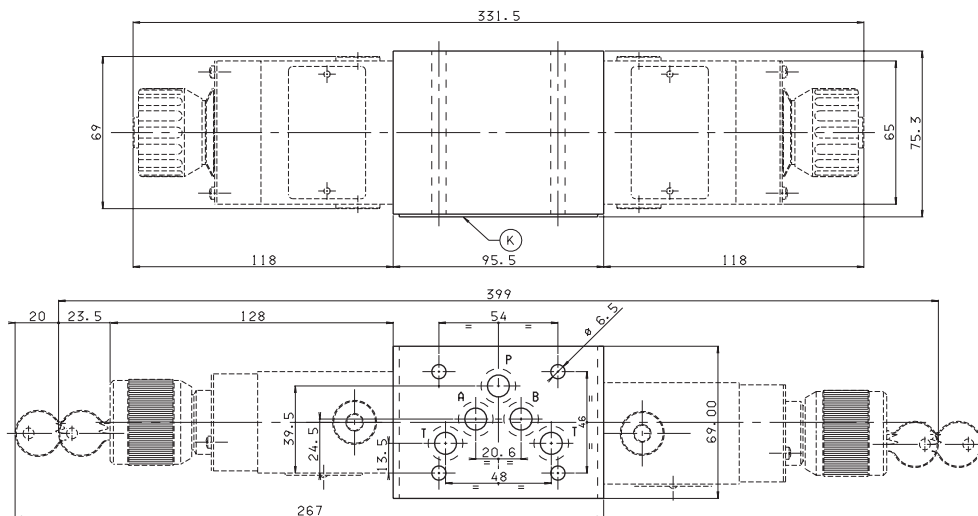
AM88A1B1

PT * = From line towards exhaust (**P** → **T** drain)

• In order to obtain versions A1, B1 and A1B1 the AM88B, AM88A or AM88AB regulators carrying block should be turned by 180°.

OVERALL DIMENSIONS

K = OR plate



Support plane specifications

