



### CDL046...

"A09" DC COILS CH. I PAGE 73

CONNECTORS STANDARD CH. I PAGE 20

## CDL046... STACKABLE CIRCUIT SELECTOR VALVES



The stackable circuit selector valves, type CDL.04.6, allows one single drive of 5 users with 4 elements connected in series.

As they are moved from high performances solenoids they don't need the external drainage.

Additionally, beyond having a reduced and compact dimensions, they can manage high hydraulic powers with a minimal pressure drop. The body valve is white zinc plated.

Max. pressure	250 bar
Max. flow	20 l/min
Overlap	positive
Hydraulic fluids	Mineral oils DIN 51524
Fluid viscosity	10 ÷ 500 mm <sup>2</sup> /s
Fluid temperature	-25°C ÷ 75°C
Ambient temperature	-25°C ÷ 60°C
Max. contamination level	class 10 in accordance NAS with 1638 with filter $\beta_{25} \geq 75$
Weight	see "Overall dimension"

### ORDERING CODE

**CDL** Stackable circuit selector valve

**04** Size NG04

**6** No. of way  
(single element)

**W** Threaded connectors  
1/4" BSP

**I** Internal drainage

**\*** No. of elements: **1 / 2 / 3 / 4**

**\*** Voltage (Tab. 1)

**\*\*** Variants (Tab. 2)

**1** Serial No.

**TAB.1 - A09 (27 W) COIL**

#### DC VOLTAGE \*\*

<b>L</b>	12V	
<b>4</b>	14V	
<b>M</b>	24V	115Vac/50Hz 120Vac/60Hz with rectifier
<b>N</b>	48V*	
<b>P</b>	110V*	230Vac/50Hz 240Vac/60Hz with rectifier
<b>Z</b>	102V*	
<b>X</b>	205V*	
<b>W</b>	Without DC coil	

Voltage codes are not stamped on the plate, their are readable on the coils.

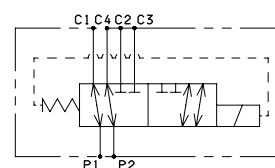
\* Special voltage

\*\* Technical data see page I • 68

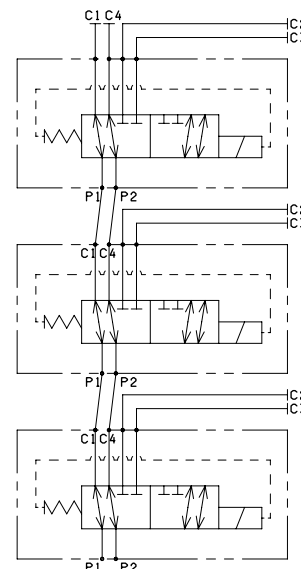
- The AMP Junior coil, the Deutsch coil with bidirectional diode and the coil with flying leads (with or without diode) coils are available in 12V or 24V DC voltage only.

### HYDRAULIC SYMBOLS

#### SINGLE ELEMENT



#### MULTI STATION CONNECTION



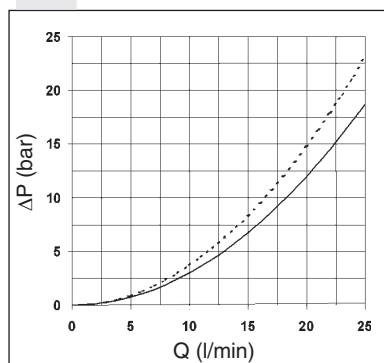
**TAB. 2 - VARIANTS**

VARIANT	CODE
No variant (without connectors)	S1(*)
Viton	SV(*)
Rotary emergency button	P2(*)(**)
Emergency button	ES(*)
AMP Junior connection	AJ(*)
Bobina con fili (250 mm)	FL
with flying leads (130 mm) and integr. diode	LD
Deutsch connection with bidir. diode	CX
Other variants available on request.	

(\*) Coils with Hirschmann and AMP Junior connection supplied without connectors. The connectors can be ordered separately, Ch. I page 20.

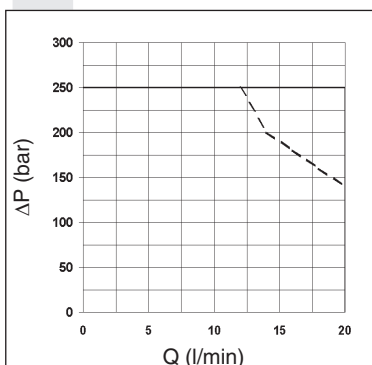
(\*\*) **P2 Emergency** tightening torque **max. 6÷9 Nm / 0.6 ÷ 0.9 Kgm** with CH n. 22

### PRESSURE DROPS



— P1 → C1  
P1 → C2  
- - - P2 → C3  
P2 → C4

### LIMITS OF USE

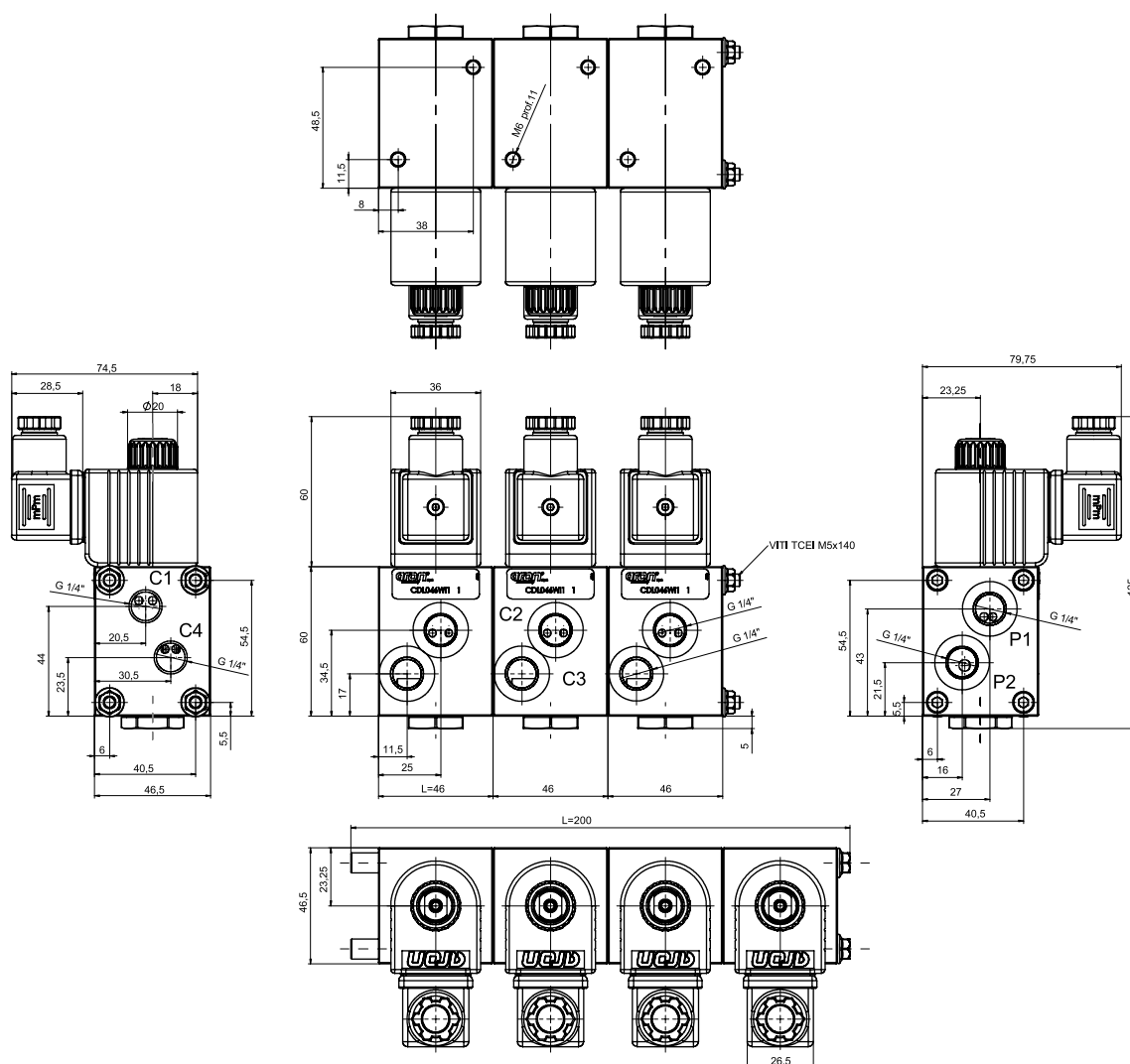


— Energizing  
- - - De-energizing

The tests have been carried out with solenoids at operating temperature and a voltage 10% less than rated voltage with a fluid temperature of 50°C. The fluid used was a mineral oil with a viscosity of 46 mm<sup>2</sup>/s at 40 degrees C.

## OVERALL DIMENSIONS

1



Fixing screws with material specifications min. 8.8  
Tighten the screws to a torque of 5 Nm (0.5 Kgm)

No. of elements	No. of way	L (Length)	Weight (Kg)	Fixing screws	Kit spare part code* (rods and studs)
1	06	46	1.05	—	—
2	08	100	2.20	TCEI M5x95	V89.54.0020
3	10	145	3.30	TCEI M5x140	V89.54.0021
4	12	200	4.45	TCEI M5x194 (special rods)	V89.54.0022

(\*) For multiple composition rods and studs are available.

Support plane specifications

