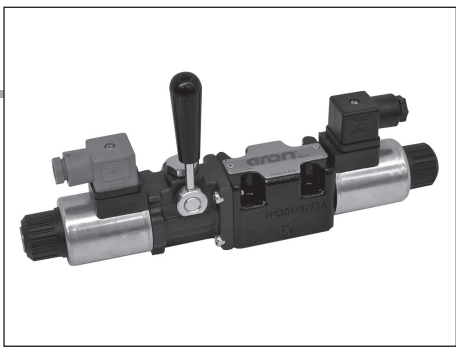


VARIANTS (*) - EMERGENCY CONTROL LEVER FOR DIRECTIONAL CONTROL VALVES (ADC/AD3E)



The emergency control lever for solenoid valves by Aron, represents a develop in terms of safety and flexibility among applied hydraulic components.

Thanks to his flexibility, the component was designed to be inserted between the valve body and the spool, providing total interchangeability between the different types of solenoid body valves manufactured by Aron. It is compatible with the standard CETOP 3 and stackable valves with threaded connections -G3/8" or 9/16-18UNF (SAE 6). The component is available for both directional control and proportional valves (for the last type of control please consult our Technical Department)

As an emergency lever applied to solenoid valves, the control can be used as a safety device in conformity with the industry standards, also playing an useful role in the event of power cuts. The control can be used in agricultural and mobile fields; the manual action can be used to carry out periodic maintenance work on mobile components of the vehicle, in perfectly safe working conditions.

(*) VARIANTS

Variant	Description
LE	Standard coil with Hirschmann connection or without coil (W voltage)
LF	Standard coil without Hirschmann connection(*)
AX	AMP Junior coil(*)
CE	Deutsch coil

Other variants available on request.

(*) Coils with Hirschmann and AMP Junior connection supplied without connectors. The connectors can be ordered separately, ch. I page 20.

Max operating pressure port T:	
dynamic	160 bar
static	210 bar

Max operating pressure port P for series connection configuration	160 bar
---	---------

- MOUNTING TYPE: C / F / H
- SPOOLS TYPE: 01/02/03*/04/16/17/66

HYDRAULIC SIMBOL

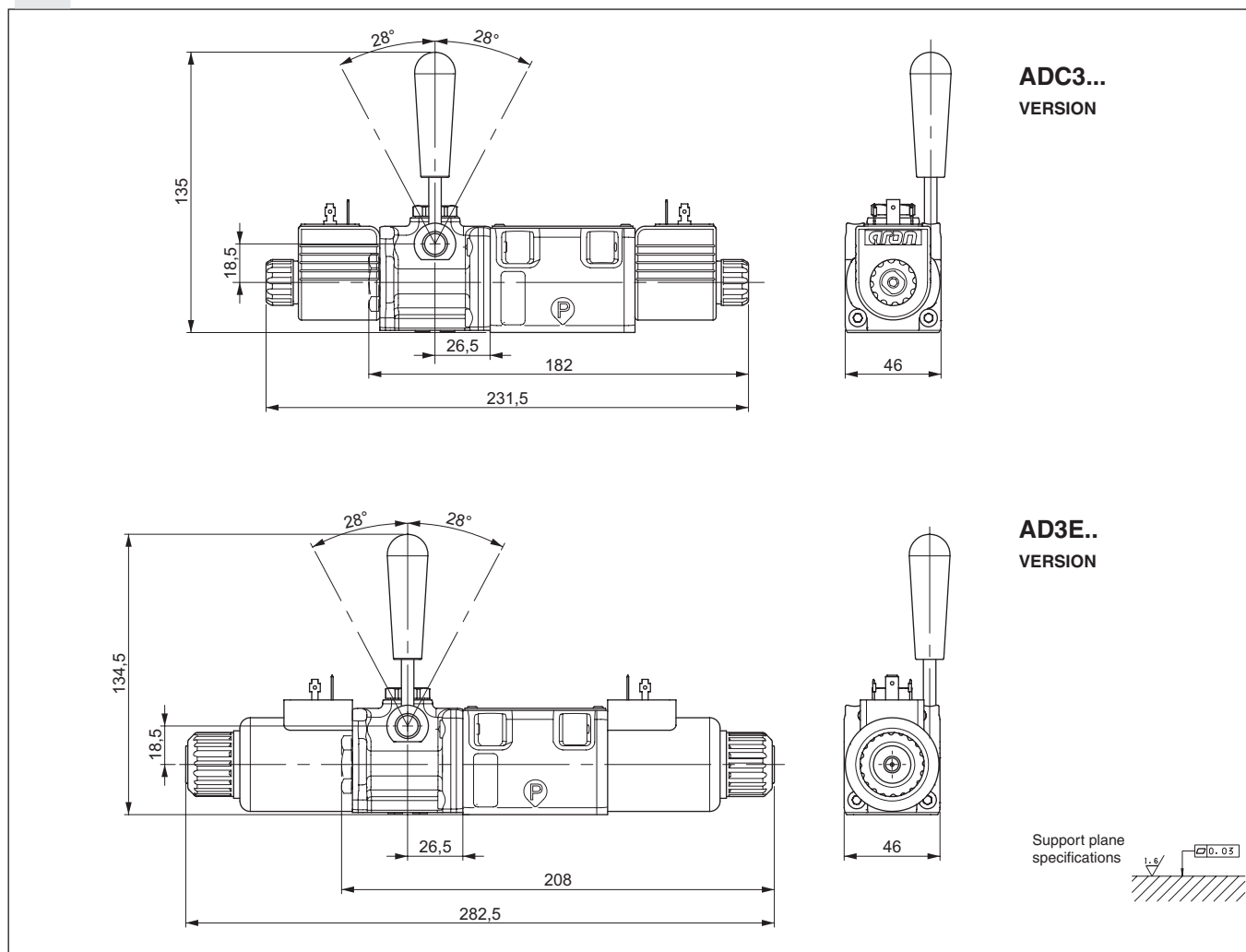


* The spool 03 is allowed only on AD3E. Not permitted with ADC3

MOUNTING COMPATIBILITY

CODE VALVE	DESCRIPTION	COIL	VOLTAGE
ADC3...	Directional control valve	A09	27 W
AD3E...	Directional control valve	D15	30 W

OVERALL DIMENSION



ADC3...
VERSION

AD3E...
VERSION

