



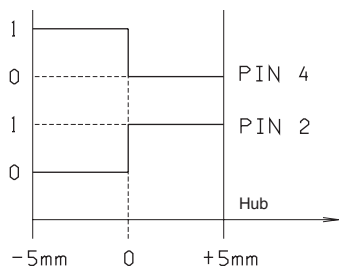
PROXIMITY SENSOR TYPE LVDT

Supply voltage	24 V \pm 20%
Polarity reversal protection	max 300 V
Switching point hysteresis	$\leq 0,06$ mm
Reproducibility	$\pm 0,02$ mm
Max. output current	≤ 250 mA
Protection against short circuit	yes
Operating temperature	-25°C \div 85°C
Connection type	connector
Protection according to DIN	IP65
Max. pressure	315 bar

CE certificate according to 89/336/EEC EMC is provided. A screened cable is needed.

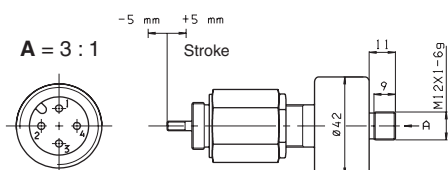
The LVDT position transducers allow to check exactly the very instant when the passage of a minimum flow is allowed.

FUNCTIONAL DIAGRAM ON PIN 2 AND 4

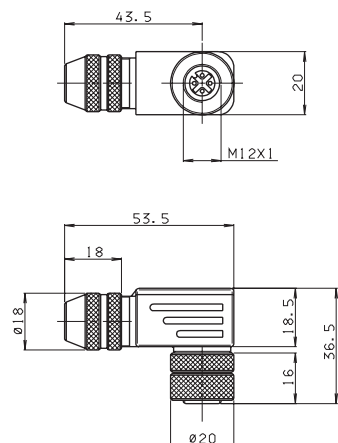


0 = Voltage Pin 2 and Pin 4 < 1,8 V
1 = Voltage Pin 2 and Pin 4 24 V \pm 20%

OVERALL DIMENSION LVDT



OVERALL DIMENSIONS CONNECTOR

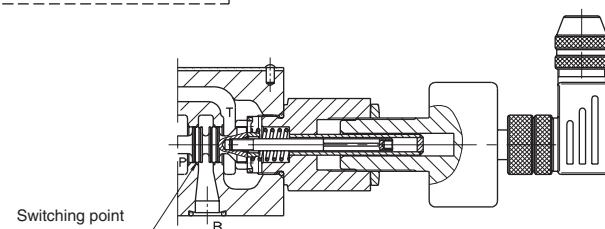
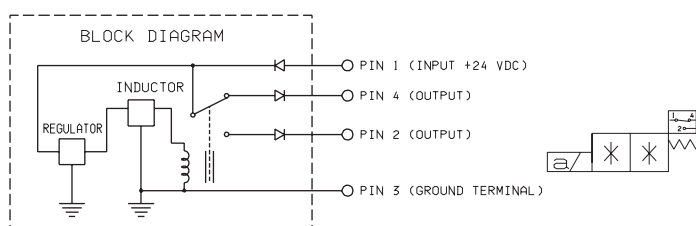


Type of protection IP67
Ambient temperature -40°C \div 85°C

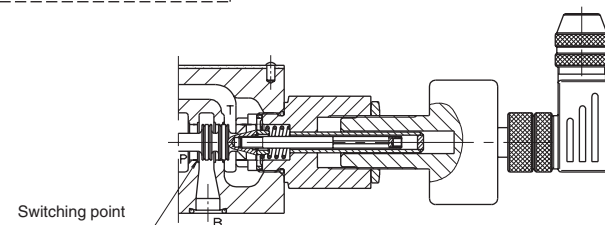
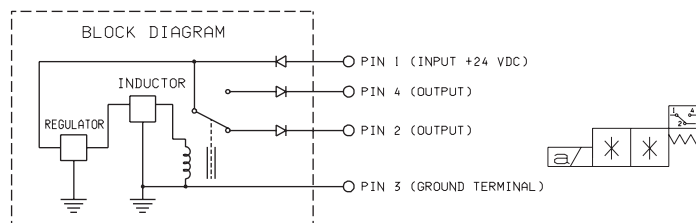
Ordering code: V86400003

ELECTRICAL CONNECTIONS LVDT

- A** With this connection, on the Pin 4 an output signal is active when no oil is crossing the valve (from P \rightarrow B).



- B** With this connection, on the Pin 4 there is no output signal when oil is crossing the valve (from P \rightarrow B).



NB:
connecting the output to Pin 4 or Pin 2 the type of contact, normally closed or open, can be chosen.