



XP3...

STANDARD CONNECTORS CH. I PAGE 20

REMSRA... CH. IX PAGE 4

VMP.../VML.../VMPE... CH. II PAGE 6

ORDERING CODE

XP

Max. pressure valve

3

CETOP 3/NG6

*

1 = max. 50 bar

2 = max. 140 bar

3 = max. 320 bar

About pressure range 3
it's suggested to add a
modular filter with 5µm
cartridge

*

E = with manual limiter

S = without manual limiter

*

Voltage:

F = 12V DC

G = 24V DC

**

Variant (*):

S1 = No variant

SV = Viton

CZ = Deutsch connection

1

Serial No.

(*) All variants are considered without connectors. The connectors must be order separately. See Ch. I Page 20

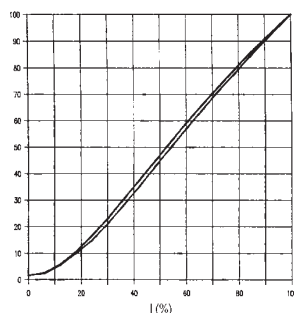
XP3... PROPORTIONAL PRESSURE CONTROL VALVES CETOP 3/NG6



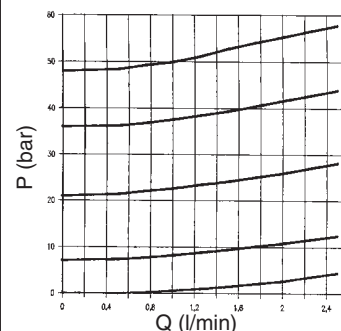
Proportional maximum pressure valves type XP3.*.. are used to regulate a hydraulic circuit pressure by means of a variable electric signal. Their precise implementation allows for high and constant operational standard up to a maximum 2,5 l/min flow rate. A manually pressure limit setting version is also available, to protect the system from uncontrolled electrical signals.

• Other valves (e.g. subplate or in-line mounted valves) should be ordered separately.

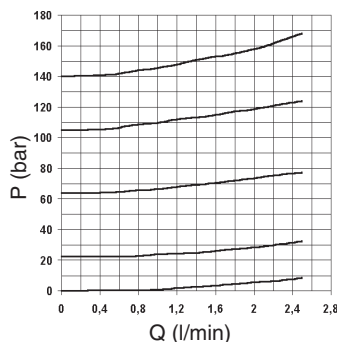
PRESSURE - SIGNAL
(tested with Q = 1 l/min)



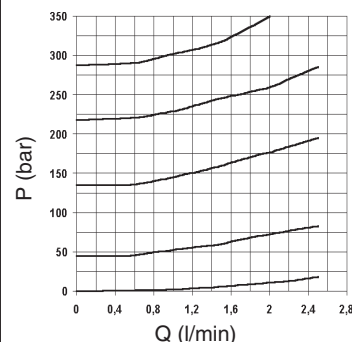
PRESSURE - FLOW RATE 1



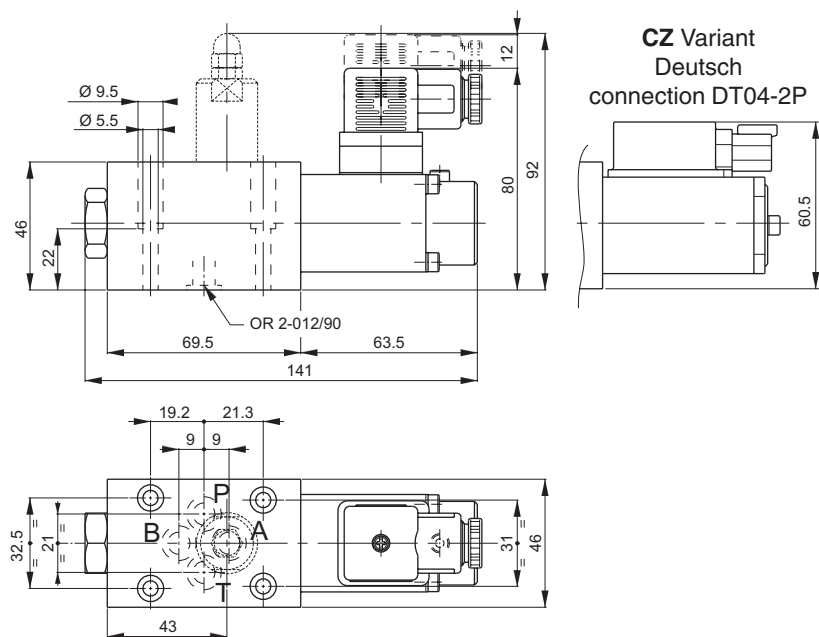
PRESSURE - FLOW RATE 2



PRESSURE - FLOW RATE 3

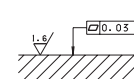


OVERALL DIMENSIONS



Fixing screws UNI 5931 M5x30
(min. 8.8 material screws are recommended)
Tightening torque $4 \div 5 \text{ Nm}$ / $0.4 \div 0.5 \text{ Kg}$

Support plane
specifications



Max. operating pressure (depending on the flow rate)	350 bar
Max. flow	2,5 l/min
Max. ambient temperature	50° C
Linearity	See diagrams
Max. hysteresis	<3% of nominal value
Repeatability error (between 150 and 680 mA)	<2%
Resistance at 20°C (24V)	24.6 Ohm
Resistance at 20°C (12V)	7.2 Ohm
Max. resistance (ambient 20°C) (24V) at op. temp.	31 Ohm
Max. resistance (ambient 20°C) (12V) at op. temp.	9 Ohm
Max. current at (24V)	0.68A
Max. current at (12V)	1.25A
Type of protection	IEC 144 class IP 65
Max. contamination level	class 8 in accordance with NAS 1638 with filter $\beta_{10} \geq 75$
Fluid temperature	-20°C÷75°C
Fluid viscosity	10÷500 mm ² /s
Weight	1,4 Kg

• Operating specifications are valid for fluids with 33 mm²/s at 50°C, using specified ARON electronic control units.

ELECTRONIC CONTROL UNITS

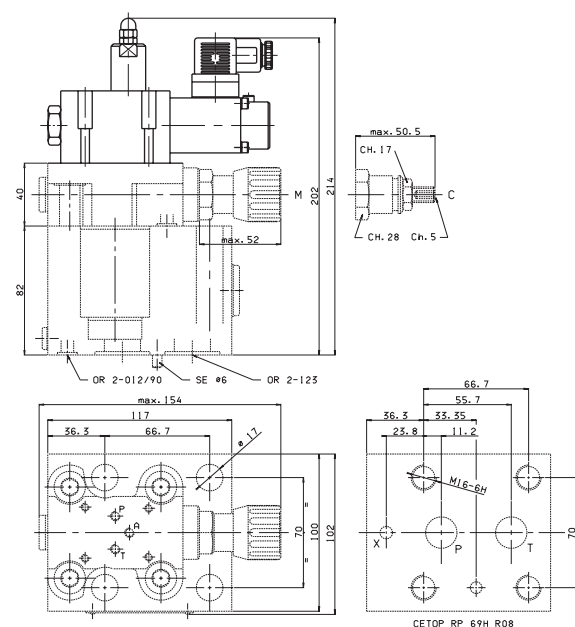
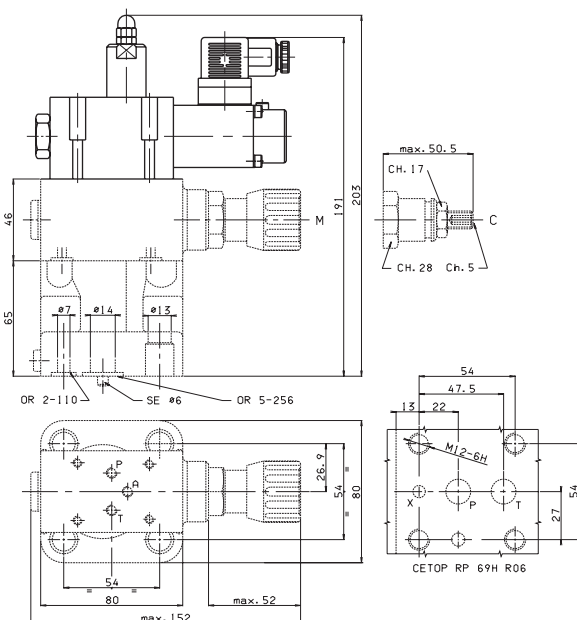
REM.S.RA.*.*

Card type control for single solenoid 12V and 24V.

Recommended dither frequency 330 Hz.

TYPICAL INSTALLATION XP3... + VMPE16...

TYPICAL INSTALLATION XP3... + VMPE25...



• WITH MOUNTING ON VMPE USE THE FOLLOWING CALIBRATED ORIFICES (SEE V.M.P.*.E VALVE AQ VARIANT)

VMPE.16...
A = Ø 1 mm
B = Ø 0,3 mm

VMPE.25...
A = Ø 1,2 mm
B = Ø 0,5 mm

