



30
kN

60 \varnothing 25
mm

R
3/8"
BSP

R
250
bar

GO/GC
3/8"
BSP

GO
200
bar

GC
300
bar

15
kN

900
nm

24
kg

20
l/min

Hydraulic rotator FHR 3.000RF is cost-effective solution generally for seasonal use in forestry, agriculture, road and building construction, general cargo and material handling.

Rotator's upper mount is applied in EYE form factor of the knuckle joint. Robust and tough built to withstand even overloads. The wide of eye is common standard width 60mm and the knuckle pin diameter 25mm.



Rotator lower mount is applied in FLANGE form factor to mount direct on grapple / tool surface by fixing with screws

173
 \varnothing 173
17(x4)
mm

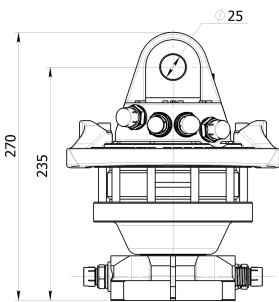
GO/GC
3/8"
BSP



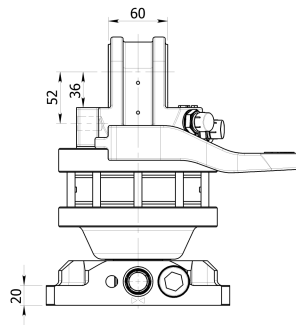
FHL 01-A/B-60/25



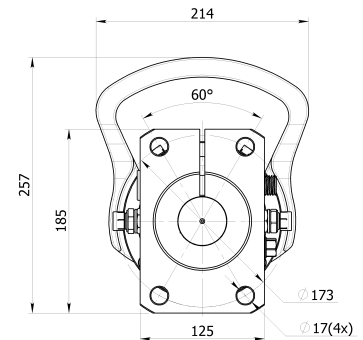
FHL 01B-A/B-60/25



20



20





On request by special conditions there are metric nipples available for rotator FHR 3.000RF


FORESTRY GENERAL CARGO AGRICULTURE CONSTRUCTION





Hydraulic rotator FHR 3.000RF is cost-effective solution generally for seasonal use in forestry, agriculture, road and building construction, general cargo and material handling.


 Rotator's upper mount is applied in EYE form factor of the knuckle joint. Robust and tough built to withstand even overloads. The wide of eye is common standard width 60mm and the knuckle pin diameter 25mm.

 Rotator lower mount is applied in FLANGE form factor to mount direct on grapple / tool surface by fixing with screws

 Rotator FHR 3.000RF based on reliable vane type hydraulic motor which delivers torque up to 900Nm at 25MPa.

 Fomoko rotator FHR 3.000RF is compatible with FHL 01-A/B-60/25 and FHL 01B-A/B-60/25 series links.

 Rotator for shipping is packed in compact solid cardboard box with dimensions 340x230x240mm.

 We providing TWO year warranty for this rotator.

On request by special conditions there are metric nipples available for rotator FHR 3.000RF

FORESTRY GENERAL CARGO AGRICULTURE CONSTRUCTION

