



73 \varnothing 30 mm	3/8" BSP	250 bar	3/8" BSP	200 bar	300 bar

Rotator's upper mount is applied in EYE form factor of the knuckle joint. Robust and tough built to withstand even overloads. The wide of eye is common standard width 73mm and the knuckle pin diameter 30mm.

Hydraulic rotator FHR 5.500F6 is cost-effective solution generally for seasonal use in forestry, agriculture, road and building construction, general cargo and material handling.



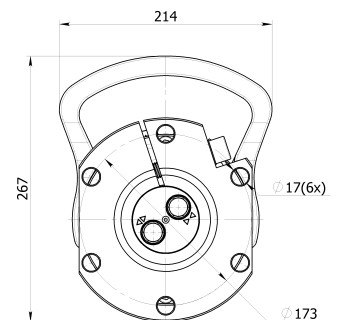
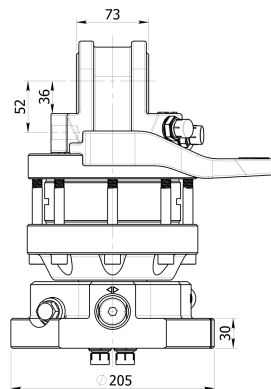
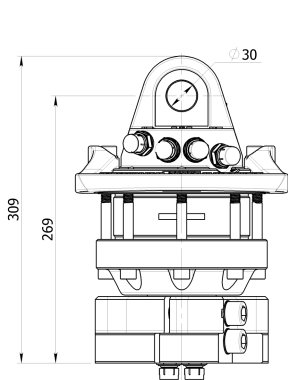
FHL 01-A/B-73/30



FHL 01B-A/B-73/30

Rotator lower mount is applied in FLANGE form factor to mount direct on grapple / tool surface by fixing with screws

\varnothing 173 17(x6) mm	3/8" BSP	3/8" BSP



On request by special conditions there are metric nipples available for rotator FHR 5.500F6



Hydraulic rotator FHR 5.500F6 is cost-effective solution generally for seasonal use in forestry, agriculture, road and building construction, general cargo and material handling.



Rotator's upper mount is applied in EYE form factor of the knuckle joint. Robust and tough built to withstand even overloads. The wide of eye is common standard width 73mm and the knuckle pin diameter 30mm.



Rotator lower mount is applied in FLANGE form factor to mount direct on grapple / tool surface by fixing with screws



Rotator FHR 5.500F6 based on reliable vane type hydraulic motor which delivers torque up to 1300Nm at 25MPa.



Fomoko rotator FHR 5.500F6 is compatible with FHL 01-A/B-73/30 and FHL 01B-A/B-73/30 series links.



Rotator for shipping is packed in compact solid cardboard box with dimensions 340x230x240mm.



We providing TWO year warranty for this rotator.

On request by special conditions there are metric nipples available for rotator FHR 5.500F6

FORESTRY



GENERAL CARGO



AGRICULTURE



CONSTRUCTION

