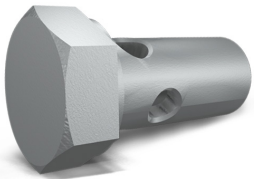
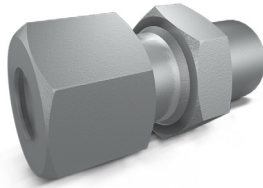


RACCORDI VARI PER MONTAGGIO

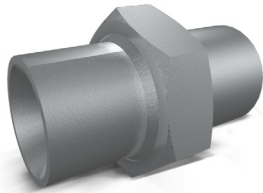
TIPO / TYPE
VF



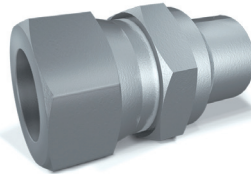
TIPO / TYPE
NDO



TIPO / TYPE
ND



TIPO / TYPE
NDG



DIFFERENT FITTINGS

IMPIEGO:

Raccordi per il montaggio delle valvole.

MATERIALI E CARATTERISTICHE:

Materiale: acciaio zincato

USE AND OPERATION:

Fittings for valve mounting.

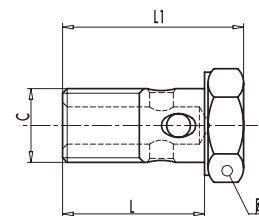
MATERIALS AND FEATURES:

Material: zinc-plated steel



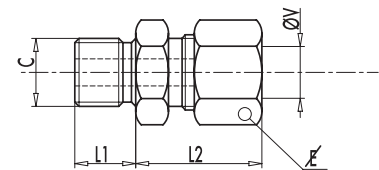
VITE FORATA - HOLED SCREW

| CODICE CODE | SIGLA TYPE | COPPIA DI SERRAGGIO CLOSING COUPLE | | L mm | L1 mm | E mm | PESO WEIGHT Kg. |
|----------------|---------------|---------------------------------------|--------------|---------|----------|---------|-----------------------|
| | | Nm | C GAS-MET | | | | |
| R1350 | VF 1/4" | 55 | G 1/4" | 28 | 34 | 19 | 0,04 |
| R1360 | VF 3/8" | 70 | G 3/8" | 31 | 39 | 22 | 0,05 |
| R1370 | VF 1/2" | 85 | G 1/2" | 38 | 46 | 27 | 0,08 |
| R1390 | VF 14 | 60 | M14X1,5 | 27 | 33,5 | 19 | 0,03 |
| R1380 | VF 18 | 75 | M18X1,5 | 36 | 44 | 24 | 0,06 |



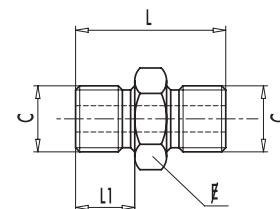
NIPPO CON DADO E OGIVA - NIPPLE WITH NUT AND OLIVE

| CODICE CODE | SIGLA TYPE | C GAS | ØV mm | L1 mm | L2 mm | E mm | PESO WEIGHT Kg. |
|----------------|---------------|----------|----------|----------|----------|---------|-----------------------|
| | | | | | | | |
| R1110 | NDO 3/8"X12L | G3/8" | 12 | 13 | 28 | 22 | 0,06 |
| R1130 | NDO 1/2"X12L | G1/2" | 12 | 13 | 32 | 22 | 0,10 |
| R1140 | NDO 1/2"X15L | G1/2" | 15 | 13 | 34 | 27 | 0,12 |



NIPPO DOPPIO - DOUBLE NIPPLE

| CODICE CODE | SIGLA TYPE | C GAS | L mm | L1 mm | E mm | PESO WEIGHT Kg. |
|----------------|---------------|----------|---------|----------|---------|-----------------------|
| | | | | | | |
| R1115 | ND 3/8"X 3/8 | G3/8" | 33 | 13 | 22 | 0,05 |
| R1135 | ND 1/2"X 1/2 | G1/2" | 38 | 15 | 27 | 0,07 |



NIPPO CON DADO A GIRELLO - NIPPLE WITH ROTARY NUT

| CODICE CODE | SIGLA TYPE | C-V GAS | L1 mm | L2 mm | E mm | PESO WEIGHT Kg. |
|----------------|---------------|------------|----------|----------|---------|-----------------------|
| | | | | | | |
| R1144 | NDG 1/2" | G 1/2" | 14 | 37 | 27 | 0,07 |
| R1146 | NDG 3/4" | G 3/4" | 16 | 52 | 32 | 0,11 |

