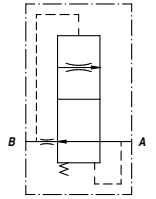
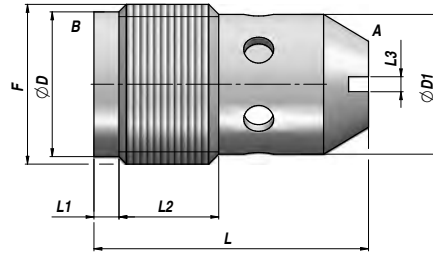


VSC



Codice Code Bestell-Nr.	F BSP	Q MAX l/min B>A	Q MAX l/min A>B	P MAX bar	Tipo Type Typ	L	L1	L2	L3	ØD	ØD1	kg x 100
VCG505.10*000	1/4"	10	15	350	VSC 010-*	23	-	8	1,5	-	10,5	1,00
VCG505.20*000	3/8"	16	25	350	VSC 020-*	28	2,5	10,5	1,5	14,5	14	2,60
VCG505.30*000	1/2"	45	60	350	VSC 030-*	36	5	12	2	18	17	5,00

* = Portata Nominale - Nominal Flow - Nenndurchfluß (l/min - 50 bar)
 * VSC010: A = 1 - B = 2 - C = 3 - D = 4 - E = 5 - F = 6 - G = 7 - H = 8 - I = 9 - L = 10
 * VSC020: A = 2 - B = 4 - C = 6 - D = 8 - E = 10 - F = 12 - G = 14 - H = 16
 * VSC030: A = 12 - B = 16 - C = 20 - D = 25 - E = 30 - F = 35 - G = 40 - H = 45

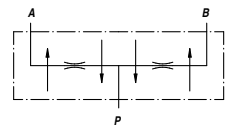
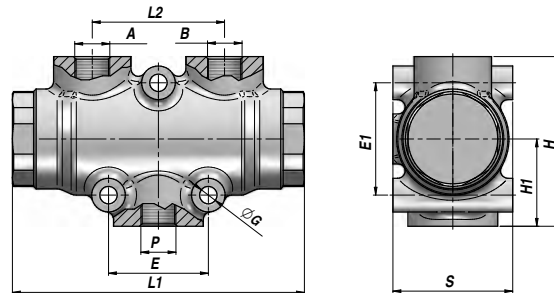
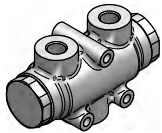
CARTUCCIA
 CARTRIDGE
 PATRONE

MATERIALE - MATERIAL: ACCIAIO - STEEL - STAHL

COLLETTORE: VEDI PAGINA 44
 VALVE ADAPTER: SEE PAGE 44
 GEHÄUSE: SIEHE SEITE 44

VEQ

DIVISORE DI FLUSSO
FLOW DIVIDER
STROMTEILER



Codice Code Bestell-Nr.	P BSP	A - B	Q MIN/MAX l/min	P MAX bar	Tipo Type Typ	L1	L2	E	E1	ØG	H1	H	S	kg
V3615.0311	3/8"	3/8"	1/ 3	250	VEQ 8	117	53	40	45	7	35	68	48	1,27
V3615.0312	3/8"	3/8"	3/ 6	250	VEQ 10	117	53	40	45	7	35	68	48	1,27
V3615.0313	3/8"	3/8"	6/10	250	VEQ 15	117	53	40	45	7	35	68	48	1,28
V3615.0314	3/8"	3/8"	10/20	250	VEQ 20	117	53	40	45	7	35	68	48	1,27
V3615.0315	3/8"	3/8"	20/32	250	VEQ 22	117	53	40	45	7	35	68	48	1,28
V3615.0316	1/2"	3/8"	25/40	250	VEQ 25	117	53	40	45	7	35	68	48	1,28
V3615.0317	1/2"	3/8"	40/60	250	VEQ 30	117	53	40	45	7	35	68	48	1,26
V3615.0318	1/2"	3/8"	60/80	250	VEQ 50	117	53	40	45	7	35	68	48	1,26

MONTAGGIO IN LINEA
 LINE MOUNTING
 REIHENMONTAGE

MATERIALE - MATERIAL: GHISA - CAST IRON - HYDRAULIKGUSS