

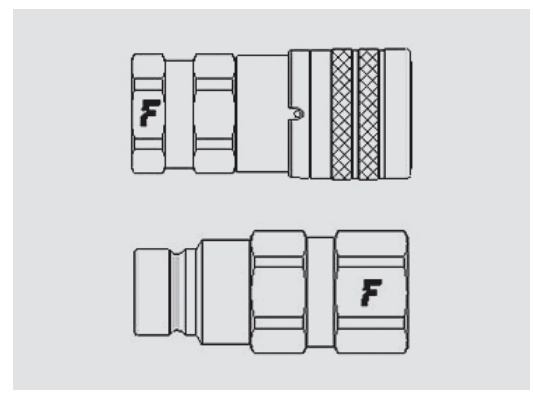
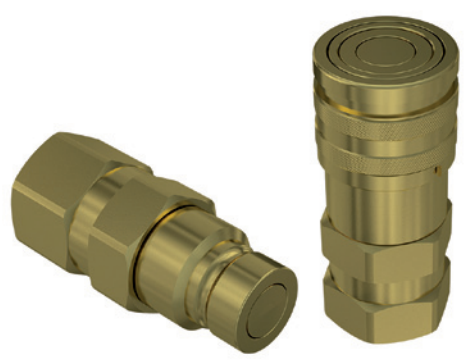
2FFI brass



Flat face couplings, ISO 16o28, brass.

Flat face couplings, with brass components and seals in FKM (Viton). Suitable for industrial applications. ISO 16o28 interchange.

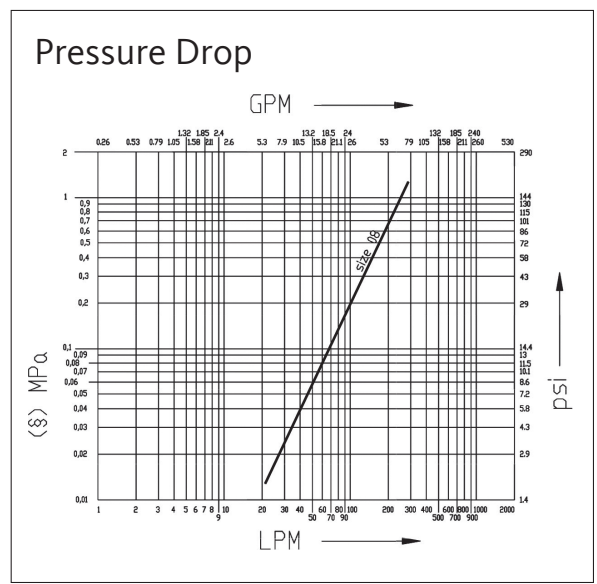
Applications



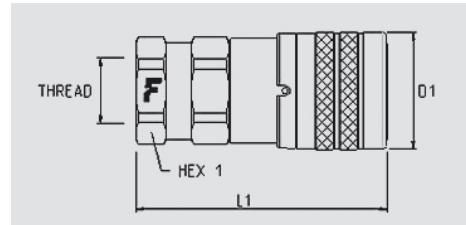
Technical Specifications

dash	Size		Working Pressure (MPa)	Flow Rate (l/min)	Spillage (ml)	Force to Connect (N)	Burst pressure (MPa)		
	mm	inch					Male	Female	Male + Female
08	12,5	1/2"	12	100	0,01	220	50	50	50

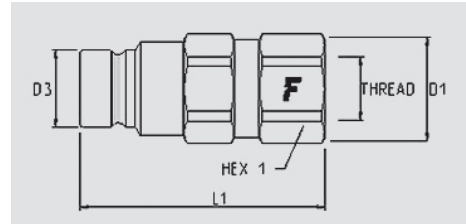
Material	Brass
Seals	VITON
Working temperatures	- 20 °C to + 200 °C
Surface treatment	
Series Interchange	ISO 16o28
Valve Type	Flat
Connection	Push to Connect
Disconnection	Sleeve Retraction
Connection Under Pressure	Not Allowed



2FFI brass



Size		Thread details			FEMALE						
inch	mm	Thread Type	Standard	Thread	Part Number	L (L1 + Thread)		D1		HEX1	
						mm	inch	mm	inch	mm	inch
1/2"	12,5	F NPTF	ANSI B1.20.3	NPTF 3/4 FEMALE	2FFI12-34NPTF5V	86,4	3,4	38	1,5	34	1,34



Size		Thread details			MALE								
inch	mm	Thread Type	Standard	Thread	Part Number	L (L1 + Thread)		D1		D3		HEX1	
						mm	inch	mm	inch	mm	inch	mm	inch
1/2"	12,5	F NPTF	ANSI B1.20.3	NPTF 3/4 FEMALE	FFI12-34NPTM5V	81,5	3,21	38	1,5	24,5	0,96	34	1,34

Accessories

PVC dust caps



Caps suitable for FEMALE



Caps suitable for MALE

Size		Cap Details			Size		Cap Details		
inch	mm	dash	Part number	Colour	inch	mm	dash	Part number	Colour
1/2"	12,5	08	TM 2FI12	orange	1/2"	12,5	08	TF 2FI12	orange
1/2"	12,5	08	TM 2FI12 N	black	1/2"	12,5	08	TF 2FI12 N	black

Aluminium dust caps



Caps suitable for FEMALE



Caps suitable for MALE

Size		Cap Details			Size		Cap Details		
inch	mm	dash	Part number	Colour	inch	mm	dash	Part number	Colour
1/2"	12,5	08	TM 2FI12 S		1/2"	12,5	08	TF 2FI12 S	

