

OGVFR

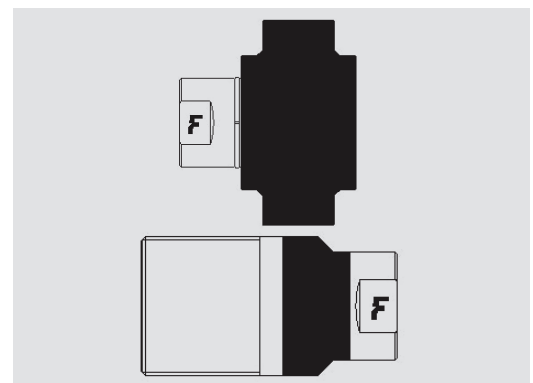


Screw to connect couplings for oil & gas application, market interchange, API 16D certified.

Screw-to-connect couplings suitable for Oil & Gas applications. Derived from standard OGV series, thanks to specific components and seals these couplings are API 16D certified and suitable for BOP application.



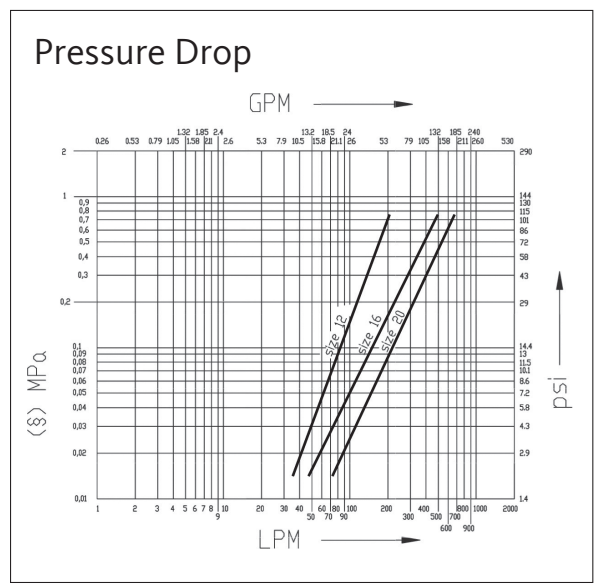
Applications



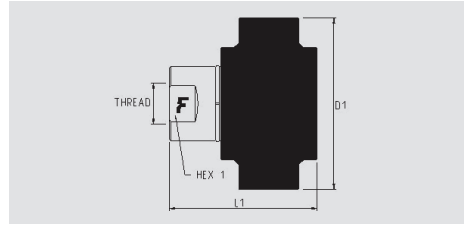
Technical Specifications

dash	Size		Working Pressure (MPa)	Flow Rate (l/min)	Spillage (ml)	Force to Connect (N)	Burst pressure (MPa)		
	mm	inch					Male	Female	Male + Female
12	20	3/4"	34,5	120	8	0	168	160	165
16	25	1"	34,5	230	18	0	165	165	172
20	31,5	1-1/4"	34,5	320	21	0	180	200	178

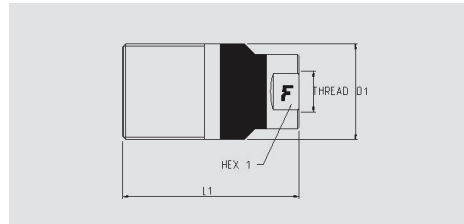
Material	Steel
Seals	SPECIAL
Working temperatures	BOP
Surface treatment	MATE 500 (CrIII); Paint
Series Interchange	MARKET
Valve Type	Poppet
Connection	Screw to Connect
Disconnection	Unscrew to Disconnect
Connection Under Pressure	Allowed Residual



OGVFR



Size		Thread details			FEMALE						
inch	mm	Thread Type	Standard	Thread	Part Number	L (L1 + Thread)		D1		HEX1	
						mm	inch	mm	inch	mm	inch
3/4"	20	F NPSF	ANSI B1.20.3	NPSF 3/4 FEMALE	OGVFR12 34NPS F	72,2	2,8	65	2,6	32	1,3
1"	25	F NPSF	ANSI B1.20.3	NPSF 1 FEMALE	OGVFR16 1NPS F	87,6	3,5	105,5	4,2	41	1,6
1-1/4"	31,5	F NPTF	ANSI B1.20.3	NPTF 1-1/4 FEMALE	OGVFR20 114NPTF	111,9	4,4	118,2	4,7	50	2



Size		Thread details			MALE								
inch	mm	Thread Type	Standard	Thread	Part Number	L (L1 + Thread)		D1		D3		HEX1	
						mm	inch	mm	inch	mm	inch	mm	inch
3/4"	20	F NPSF	ANSI B1.20.3	NPSF 3/4 FEMALE	OGVFR12 34NPS M	83,1	3,3	44,3	1,7			32	1,3
1"	25	F NPSF	ANSI B1.20.3	NPSF 1 FEMALE	OGVFR16 1NPS M	106	4,2	57,1	2,3			41	1,6
1-1/4"	31,5	F NPTF	ANSI B1.20.3	NPTF 1-1/4 FEMALE	OGVFR20 114NPTM	136,5	5,4	66,7	2,6			50	2

Accessories

Aluminium dust caps



Plugs suitable for FEMALE



Caps suitable for MALE

Size			Plug Details		Size			Cap Details	
inch	mm	dash	Part number	Colour	inch	mm	dash	Part number	Colour
3/4"	20	12	TM OGV12 S		3/4"	20	12	TF OGV12 S	
1"	25	16	TM OGV16 S		1"	25	16	TF OGV16 S	
1-1/4"	31,5	20	TM OGV20 S		1-1/4"	31,5	20	TF OGV20 S	

